

\$499,900 - 3204, 210 15 Avenue Se, Calgary

MLS® #A2261814

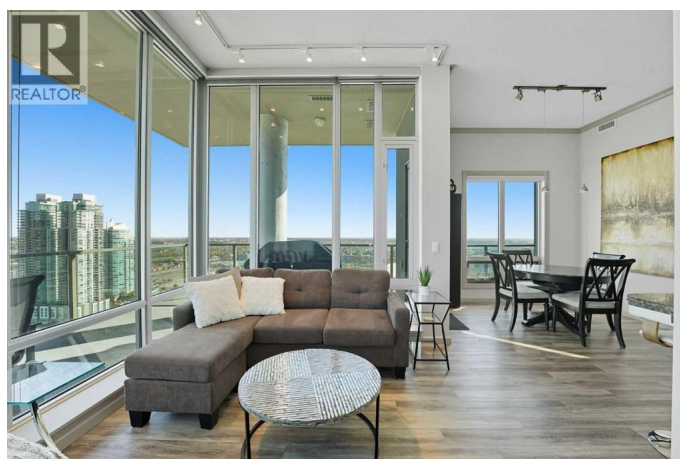
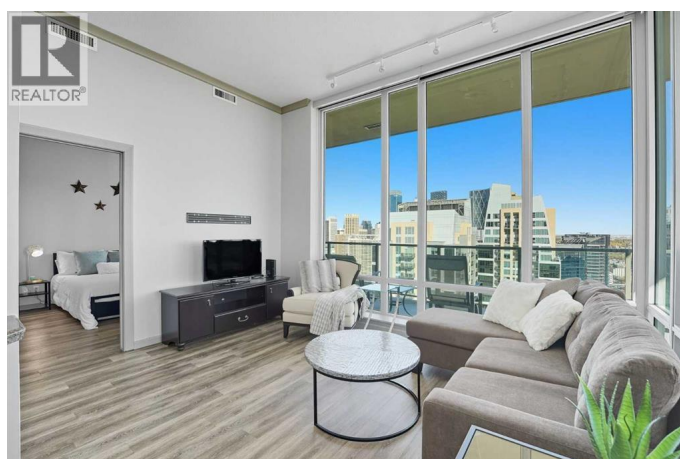
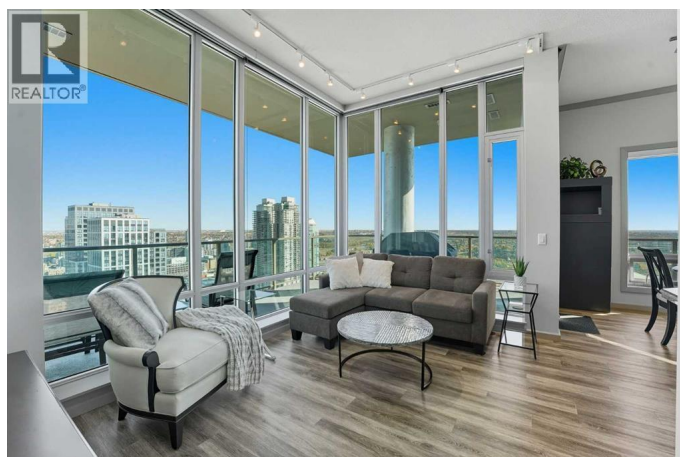
\$499,900

2 Bedroom, 2.00 Bathroom, 965 sqft

Single Family on 0.00 Acres

Beltline, Calgary, Alberta

Welcome to Vetro, one of Calgary's most sought-after high-rise condominiums, ideally located in the heart of the Beltline. Perched on the 32nd floor, this stunning 2-bedroom, 2-bathroom corner unit offers nearly 965 sq. ft. of modern living space with spectacular south-facing city and mountain views through floor-to-ceiling windows. Step inside to discover a bright and open layout featuring contemporary finishes throughout. The kitchen is equipped with sleek cabinetry, stainless steel appliances, granite countertops, and a convenient breakfast bar—perfect for entertaining or casual dining. The adjoining living and dining area flows seamlessly onto a private balcony, ideal for enjoying your morning coffee or the evening skyline. Both bedrooms are generously sized, with the primary suite offering a walk-through closet and private 4-piece ensuite. A second full bathroom, in-suite laundry, and central air conditioning add comfort and convenience to this well-designed space. Vinyl and tile flooring throughout ensure durability and style. This property includes 2 titled underground parking stalls and an assigned storage locker. Move-in ready or an exceptional turn-key investment opportunity. The Vetro building provides an array of amenities, including a fitness centre, sauna, hot tub, social and games rooms, and 24-hour security. Perfectly positioned steps from Stampede Park, the LRT, restaurants, shopping, and downtown, this location blends vibrant urban living with effortless access to



everything you need.Enjoy the best of Beltline livingâ€”modern comfort, unbeatable views, and premier amenitiesâ€”all from your sky-high retreat in Vetro. (id:6289)

Built in 2009

Essential Information

Listing #	A2261814
Price	\$499,900
Bedrooms	2
Bathrooms	2.00
Square Footage	965
Acres	0.00
Year Built	2009
Type	Single Family
Sub-Type	Condominium/Strata

Community Information

Address	3204, 210 15 Avenue Se
Subdivision	Beltline
City	Calgary
Province	Alberta
Postal Code	T2G0B5

Amenities

Amenities	Park, Playground, Schools, Shopping, Exercise Centre, Party Room, Whirlpool
Features	See remarks, Parking
Parking Spaces	2
Parking	Garage, Heated Garage, Underground, Visitor Parking
# of Garages	1

Interior

Appliances	Refrigerator, Dishwasher, Stove, Microwave Range Hood Combo, Window Coverings, Garage door opener, Washer & Dryer
Heating	Natural gas Forced air
Cooling	Central air conditioning
# of Stories	34

Exterior

Exterior	Brick, Concrete, Stucco
Construction	Poured concrete

Listing Details

Listing Office eXp Realty



The trademarks MLS®, Multiple Listing Service® and the associated logos are owned by The Canadian Real Estate Association (CREA) and identify the quality of services provided by real estate professionals who are members of CREA. REALTOR®. Member of CREA and more.

Listing information last updated on October 14th, 2025 at 3:16pm PDT