

\$699,900 - 92 Brightoncrest Rise Se, Calgary

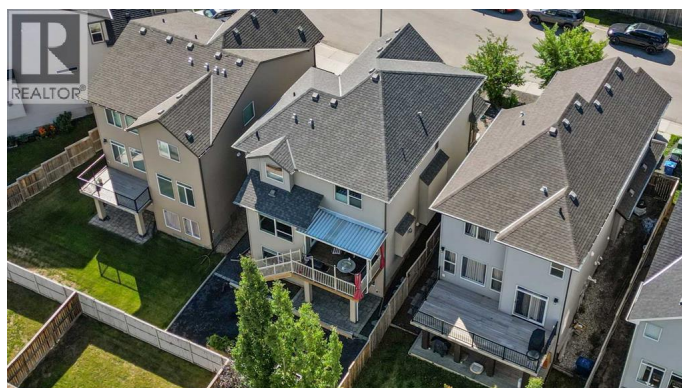
MLS® #A2261740

\$699,900

4 Bedroom, 4.00 Bathroom, 2,062 sqft
Single Family on 0.08 Acres

New Brighton, Calgary, Alberta

JEWEL OF A DEAL | NEW BRIGHTON WALK-OUT | PRIME LOCATION This exceptional home offers the perfect combination of style, function, and location—just steps from the New Brighton Clubhouse, ponds, ice rink, parks, pathways, schools, shopping, transit, and major south expressways. Enjoy year-round access to the community's premier amenities including tennis, volleyball, basketball, splash park, playgrounds, and hockey rink. Meticulously crafted and upgraded, this **URBAN STYLE WALK-OUT** home boasts over 3,025 sq ft of living space with 4 bedrooms, 3.5 bathrooms, a bonus room, and a fully finished lower level. The main floor showcases an open-concept design with a bright and spacious great room anchored by a cozy gas fireplace, flowing seamlessly into the dining area and chef-inspired kitchen. The kitchen is designed for both efficiency and entertaining, featuring shaker-style cabinetry, gas cooktop with custom hood cover, upgraded stainless steel appliances, walk-through pantry, glass tile backsplash, recessed lighting, and a dramatic central island with flush eating bar and undermount granite sink. Gleaming engineered hardwood floors and upgraded tile in all baths elevate the space. Upstairs, a central bonus room—perfect for family movie nights—separates the expansive primary suite from two additional bedrooms. The primary retreat includes a spa-inspired ensuite with deep soaker tub, separate shower, and



92 BRIGHTONCREST RISE SE
RECREATION STANDARD - CALGARY AB
MAIN LEVEL (HG) - 990.00 Sq Ft / 91.97 m²
UPPER LEVEL (AG) - 1071.75 Sq Ft / 99.57 m²
TOTAL ABOVE GRADE RMS SIZE - 2061.75 Sq Ft / 191.54 m²
BASEMENT DEVELOPED AREA (BG) - 814.92 Sq Ft / 75.71 m²
BASEMENT UNDEVELOPED AREA (BG) - 148.79 Sq Ft / 13.82 m²
TOTAL AG+BG AREA - 3025.46 Sq Ft / 281.07 m²



large walk-in closet. The fully developed walk-out basement adds a fourth bedroom, full bathroom, and spacious recreation area, providing versatility for guests, extended family, or a home gym. Outdoor living is easy with a low-maintenance landscaped yard, upper deck, lower concrete patio, and walkways. The home's curb appeal is enhanced with stone accents, wood details, paneled garage door, and a covered front entry. Additional features: Oversized, fully insulated heated double attached garage, Modern lighting and plumbing fixtures, R/O water system, White-painted baseboards, casings, and doors, Fully fenced backyard. With its ideal location, functional floor plan, and quality finishes, this home delivers both comfort and convenience. Call your friendly REALTOR® today to arrange your private tour! (id:6289)

Built in 2014

Essential Information

Listing #	A2261740
Price	\$699,900
Bedrooms	4
Bathrooms	4.00
Half Baths	1
Square Footage	2,062
Acres	0.08
Year Built	2014
Type	Single Family
Sub-Type	Freehold

Community Information

Address	92 Brightoncrest Rise Se
Subdivision	New Brighton
City	Calgary
Province	Alberta
Postal Code	T2Z0X6

Amenities

Amenities	Park, Playground, Recreation Nearby, Schools, Shopping, Recreation Centre
Features	PVC window, Closet Organizers
Parking Spaces	4
Parking	Attached Garage, Concrete, Garage, Heated Garage, Oversize
# of Garages	3

Interior

Appliances	Refrigerator, Gas stove(s), Dishwasher, Microwave, Hood Fan, Window Coverings, Garage door opener, Washer & Dryer
Heating	Natural gas Central heating, Other, Forced air
Cooling	Central air conditioning
Fireplace	Yes
# of Fireplaces	1
# of Stories	2
Has Basement	Yes
Basement	Walk out

Exterior

Exterior	Stone, Vinyl siding
Exterior Features	Fruit trees, Landscaped
Construction	Wood frame
Foundation	Poured Concrete

Listing Details

Listing Office Jayman Realty Inc.



The trademarks MLS®, Multiple Listing Service® and the associated logos are owned by The Canadian Real Estate Association (CREA) and identify the quality of services provided by real estate professionals who are members of CREA. REALTOR®. Member of CREA and more.

Listing information last updated on October 14th, 2025 at 12:01am PDT