

# \$725,000 - 351 Templevale Place Ne, Calgary

MLS® #A2260880

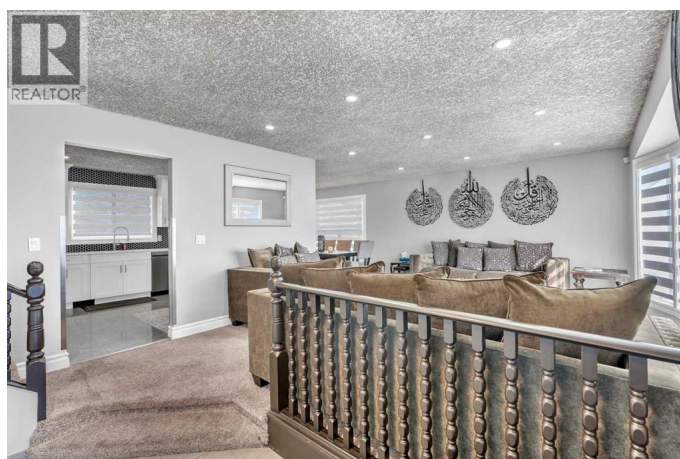
**\$725,000**

3 Bedroom, 4.00 Bathroom, 1,765 sqft

Single Family on 0.15 Acres

Temple, Calgary, Alberta

FULLY RENOVATED | LARGE 4 LEVEL SPLIT | QUIET CUL-DE-SAC | MASSIVE 6544 SQFT LOT | ATTACHED GARAGE WITH MUD ROOM | ALL NEW MECHANICALS INCLUDING FURNACE, TANKLESS HOT WATER, WATER SOFTENER AND AIR CONDITIONING | WALKOUT 3rd LEVEL | This home impresses from the start with a double attached garage, extended driveway and a welcoming front patio that captures the south sunshine. Too many upgrades to list including windows and a patio door with built-in blinds. Step inside to a neutral palette where a spacious living room is framed by oversized south windows and recessed lighting for bright, comfortable living day and night. Sightlines flow seamlessly into the dining area with elegant lighting and a built-in storage and serving bar that enhances both everyday function and entertaining. The beautifully updated kitchen inspires culinary adventures with crisp white cabinetry, full-height tile backsplash, stainless steel appliances including a gas stove and plenty of room for a table for casual meals and morning coffees. On the lower level, a massive family room invites gatherings around the fireplace with a walkout that connects indoor comfort with backyard living. A convenient powder room and access to the attached garage complete this level. Upstairs, retreat to a relaxing primary suite where a stylish ensuite boasts an oversized rain shower. Two additional bedrooms are spacious and bright,



complemented by an updated 4 pc bathroom finished with full-height tile. The fully developed basement extends the home's versatility with a large rec room easily divided by furniture into zones for work, play or fitness. A stunning bathroom here showcases dual sinks, a large rain shower, bench seating and designer tile detailing. Plenty of room to add an extra bedroom or two. Outside, enjoy a covered patio perfect for barbeques or shaded relaxation plus an expansive lawn with endless room for kids and pets to play. A storage shed keeps seasonal items organized. All set in a family friendly cul-de-sac close to Guy Weadick School, Annie Foote School and Lester B. Pearson High School. Walk to the community centre, sports courts, skating rink, exercise park and pathways or take a short 5 minute drive to the popular Village Square Leisure Centre with wave pool, gym, arena and library. Blending modern upgrades with an outstanding location, this home offers space, comfort and everyday convenience for the whole family! (id:6289)

Built in 1979

Essential Information

Listing #	A2260880
Price	\$725,000
Bedrooms	3
Bathrooms	4.00
Half Baths	1
Square Footage	1,765
Acres	0.15
Year Built	1979
Type	Single Family
Sub-Type	Freehold
Style	4 Level

Community Information

Address	351 Templevale Place Ne
Subdivision	Temple
City	Calgary
Province	Alberta
Postal Code	T1Y4V8

### Amenities

Amenities	Park, Playground, Schools, Shopping
Features	Cul-de-sac, Back lane
Parking Spaces	4
Parking	Attached Garage
# of Garages	2

### Interior

Appliances	Washer, Refrigerator, Gas stove(s), Dishwasher, Dryer, Hood Fan, Window Coverings
Heating	Natural gas Forced air
Cooling	Central air conditioning
Fireplace	Yes
# of Fireplaces	1
Has Basement	Yes

### Exterior

Exterior	Stucco
Exterior Features	Landscaped
Construction	Wood frame
Foundation	Poured Concrete

### Listing Details

Listing Office	LPT Realty
----------------	------------



The trademarks MLS®, Multiple Listing Service® and the associated logos are owned by The Canadian Real Estate Association (CREA) and identify the quality of services provided by real estate professionals who are members of CREA. REALTOR®. Member of CREA and more.

Listing information last updated on October 14th, 2025 at 7:47pm PDT