

\$1,500,000 - 3652 8 Avenue Nw, Calgary

MLS® #A2260849

\$1,500,000

2 Bedroom, 1.00 Bathroom, 895 sqft

Single Family on 0.22 Acres

Parkdale, Calgary, Alberta

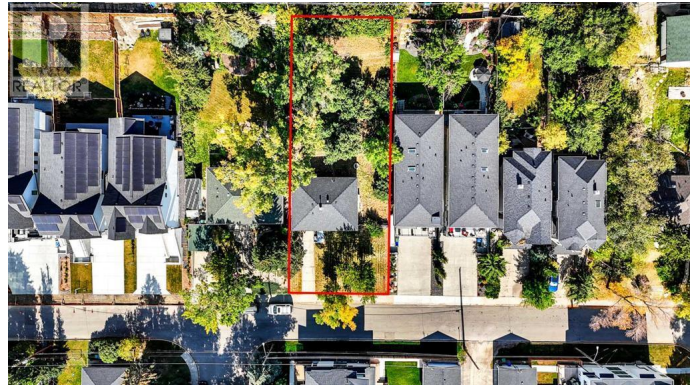
Land Value Only. Subdivision has been done for 2 lots of 32/150 ft each and DP is approved with conditions for both lots with 3,020 sq ft detached house on one lot and 3,400 sq ft detached house on the second lot. The land is surrounded by luxury custom built homes - you could be the next one on the block! Easy Access to 16 Ave, Crowchild Tr, Memorial Dr, playgrounds, parks, close proximity to the Foothills and Children's Hospital, University of Calgary, Bow River, Bow River pathways and easy access to downtown & trendy Kensington shops and eateries. Parkdale is an inner-city destination with a strong community spirit. Call your Realtor now to book a showing!! (id:6289)

Built in 1954

Essential Information

Listing #	A2260849
Price	\$1,500,000
Bedrooms	2
Bathrooms	1.00
Square Footage	895
Acres	0.22
Year Built	1954
Type	Single Family
Sub-Type	Freehold
Style	Bungalow

Community Information



Address	3652 8 Avenue Nw
Subdivision	Parkdale
City	Calgary
Province	Alberta
Postal Code	T2N1E1

Amenities

Amenities	Playground
Features	See remarks, Back lane
Parking Spaces	2
Parking	Attached Garage
# of Garages	1
View	View

Interior

Appliances	Washer, Dishwasher, Stove, Dryer, Window Coverings
Heating	Forced air
Cooling	None
# of Stories	1
Has Basement	Yes

Exterior

Exterior	Wood siding
Exterior Features	Fruit trees, Garden Area, Landscaped
Construction	Wood frame
Foundation	Poured Concrete

Listing Details

Listing Office	Real Estate Professionals Inc.
----------------	--------------------------------



The trademarks MLS®, Multiple Listing Service® and the associated logos are owned by The Canadian Real Estate Association (CREA) and identify the quality of services provided by real estate professionals who are members of CREA. REALTOR®. Member of CREA and more.

Listing information last updated on October 12th, 2025 at 3:18pm PDT