

\$4,500,000 - 283 A Range, Rural Rocky View County

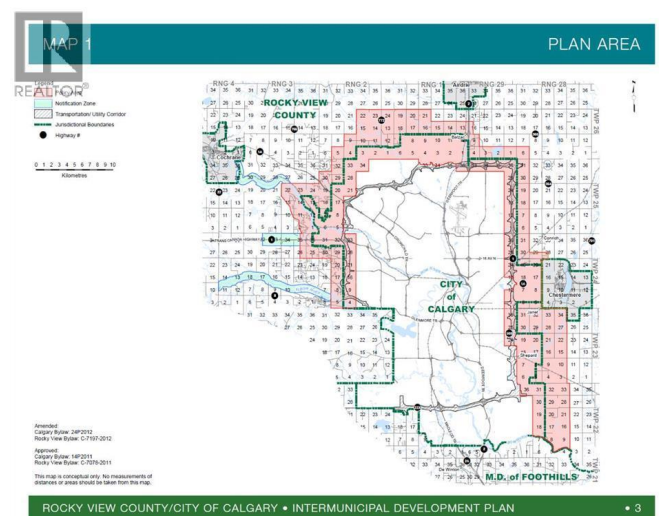
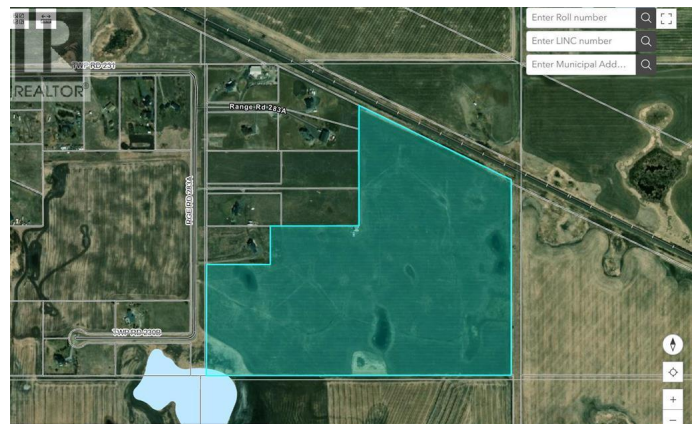
MLS® #A2256202

\$4,500,000

0 Bedroom, 0.00 Bathroom,
Vacant Land on 92.48 Acres

N/A, Rural Rocky View County, Alberta

Opportunity Knocks At Your Door!! Attention all investors and developers, we are pleased to bring you a 92.48 +/-acre Land parcel with an unbeatable location for near future growth. The recent PRAIRIE ECONOMIC GATEWAY AGREEMENT between the City of Calgary and Rockyview County brings an incredible number of opportunities to this area. This parcel lies right next to the approved plan area. As well, HOTCHKISS, one of Calgary's newest communities, is only a couple of minutes away. A road allowance at the east edge of the property will then make access to 146 Ave even easier* (subject to Rockyview County approval). This property is a golden opportunity which is right next to city limits and developments at the cost of only \$48659 Per Acre. Call before you miss this chance!!Directions:From Community Hotchkiss go East on 146 AVE Se then turn North on Range Rd 284, Turn East on Township Rd 231, TurnSouth on Range RD 283 A and Property is on the left side. (id:6289)



Essential Information

Listing #	A2256202
Price	\$4,500,000
Bathrooms	0.00
Acres	92.48
Type	Vacant Land
Sub-Type	Freehold

Community Information

Address	283 A Range
Subdivision	N/A
City	Rural Rocky View County
Province	Alberta
Postal Code	T1X0G9

Listing Details

Listing Office TREC The Real Estate Company



The trademarks MLS®, Multiple Listing Service® and the associated logos are owned by The Canadian Real Estate Association (CREA) and identify the quality of services provided by real estate professionals who are members of CREA. REALTOR®. Member of CREA and more.

Listing information last updated on October 14th, 2025 at 2:01pm PDT