

\$570,000 - 7927 36 Avenue Nw, Calgary

MLS® #A2254662

\$570,000

2 Bedroom, 1.00 Bathroom, 1,015 sqft
Single Family on 0.14 Acres

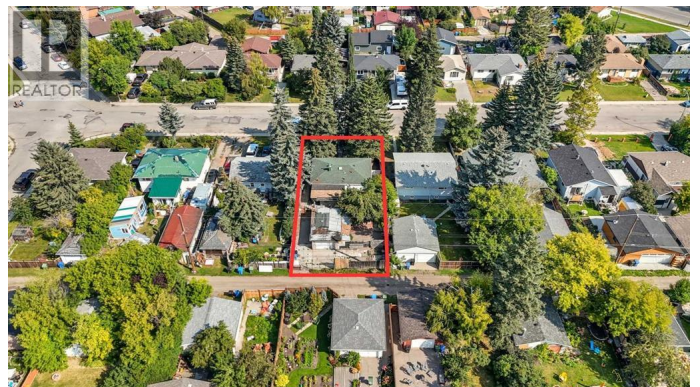
Bowness, Calgary, Alberta

BRING YOUR OFFER!!! Builders, Developers and all buyers looking for a beautiful lot to build on! All I can say is...."What a spot to call home!" This PRIME 50' x 120' lot has all the potential to make all of your dreams come true! Located on one of the most beautiful & convenient streets in vibrant Bowness & waiting to be transformed into an Oasis! It boasts 50 ft frontage with rear lane access and 120Ft Depth! You're walking distance to Bow River pathways, parks, schools, shops, restaurants with quick access to Stoney Trail, Downtown Calgary, the University of Calgary, Market Mall & of course - the Mountains!! Bowness is THE INNER CITY community that everyone is talking about - it is growing, developing quickly & is an amazing community to invest in today! Immediate possession available! Land Use Code: R-CG * (id:6289)

Built in 1953

Essential Information

Listing #	A2254662
Price	\$570,000
Bedrooms	2
Bathrooms	1.00
Square Footage	1,015
Acres	0.14
Year Built	1953
Type	Single Family



Sub-Type	Freehold
Style	Bungalow

Community Information

Address	7927 36 Avenue Nw
Subdivision	Bowness
City	Calgary
Province	Alberta
Postal Code	T3B1V6

Amenities

Amenities	Park, Playground, Schools, Shopping
Features	Treed, See remarks, Back lane
Parking Spaces	1
Parking	Detached Garage
# of Garages	1

Interior

Appliances	Washer, Refrigerator, Stove, Dryer
Heating	Forced air
Cooling	None
# of Stories	1

Exterior

Exterior	Stucco
Foundation	Brick

Listing Details

Listing Office	CIR Realty
----------------	------------



The trademarks MLS®, Multiple Listing Service® and the associated logos are owned by The Canadian Real Estate Association (CREA) and identify the quality of services provided by real estate professionals who are members of CREA. REALTOR®. Member of CREA and more.

Listing information last updated on October 13th, 2025 at 3:16am PDT