

# \$439,000 - 8 Pinelore Place Ne, Calgary

MLS® #A2253394

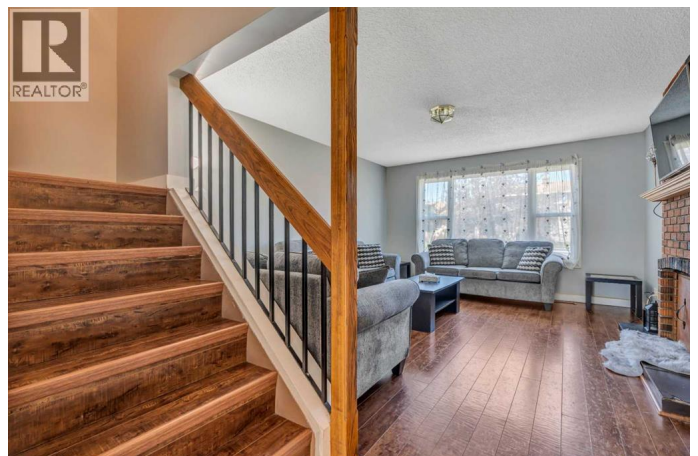
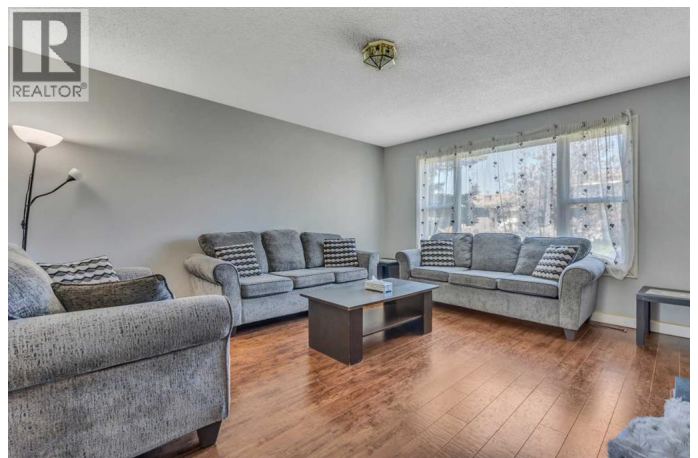
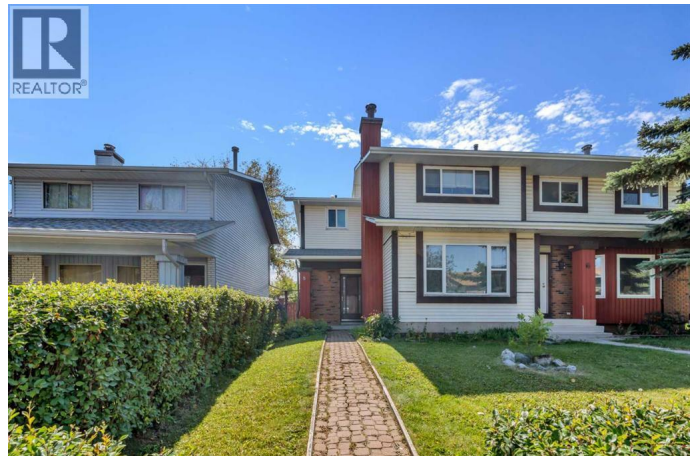
**\$439,000**

3 Bedroom, 2.00 Bathroom, 1,217 sqft

Single Family on 0.08 Acres

Pineridge, Calgary, Alberta

~ OPEN HOUSE Sun Oct 19th between 12 & 3 pm ~ VERY WELL KEPT | QUIET CUL-DE-SAC | FULLY FINISHED | OVERSIZED LOT | OVERSIZED DOUBLE GARAGE WITH 10'™ CEILINGS | PAVED BACK LANE | SOUTH BACKYARD Nestled on a quiet cul-de-sac in the heart of Pineridge, this semi-detached home combines thoughtful updates with family comfort and investor appeal. A welcoming front pathway leads inside to a spacious living room featuring an oversized window that fills the space with natural light and a cozy brick surround wood burning fireplace, perfect for gathering together on cool winter evenings. Updated flooring and a neutral colour palette create a move-in ready backdrop throughout the main level. The bright eat-in kitchen offers white cabinetry, a stainless steel fridge with water and ice dispenser and a large window overlooking the sunny backyard. An adjacent dining room sets the stage for family meals and entertaining with sliding patio doors extending the space onto an enclosed deck for barbeques and relaxed weekends. A tucked away powder room is conveniently located as you head downstairs. Upstairs, 3 spacious bedrooms provide restful retreats filled with natural light, complemented by a 4-piece bathroom. The fully finished basement expands your living space with a large rec room ideal for movies, game nights or a home gym, plus a built-in desk area for work, study or creative projects. Ample storage keeps



everything organized. Outdoors, a south-facing backyard offers room to play, garden and gather around a firepit on summer nights. Garden beds and grassy space make it both functional and inviting for families. A pathway leads to the oversized detached garage with 10â€™™ ceilings and access to the paved back lane. Location is unmatched with Pineridge School, Saint Patrick School and Clarence Sansom School all within walking distance, along with transit, Village Square Leisure Centre, shops, and restaurants. Sundridge Mall and the C-Train station are just a quick drive, ensuring excellent convenience and accessibility. This well-cared-for home is an outstanding opportunity for families seeking space and community or investors looking for a property with strong long-term appeal.

(id:6289)

Built in 1977

**Essential Information**

|                |               |
|----------------|---------------|
| Listing #      | A2253394      |
| Price          | \$439,000     |
| Bedrooms       | 3             |
| Bathrooms      | 2.00          |
| Half Baths     | 1             |
| Square Footage | 1,217         |
| Acres          | 0.08          |
| Year Built     | 1977          |
| Type           | Single Family |
| Sub-Type       | Freehold      |

**Community Information**

|             |                     |
|-------------|---------------------|
| Address     | 8 Pinelore Place Ne |
| Subdivision | Pineridge           |
| City        | Calgary             |
| Province    | Alberta             |
| Postal Code | T1Y3V8              |

## Amenities

|                |                                     |
|----------------|-------------------------------------|
| Amenities      | Park, Playground, Schools, Shopping |
| Features       | Cul-de-sac, Back lane               |
| Parking Spaces | 2                                   |
| Parking        | Detached Garage, Oversize           |
| # of Garages   | 2                                   |

## Interior

|                 |   |
|-----------------|---|
| Appliances      | Refrigerator, Dishwasher, Stove, Window Coverings, Washer & Dryer |
| Heating         | Natural gas Forced air  |
| Cooling         | None  |
| Fireplace       | Yes   |
| # of Fireplaces | 1   |
| # of Stories    | 2   |
| Has Basement    | Yes   |

## Exterior

|                   |                     |
|-------------------|---------------------|
| Exterior          | Brick, Vinyl siding |
| Exterior Features | Landscaped          |
| Construction      | Wood frame          |
| Foundation        | Poured Concrete     |

## Listing Details

|                |            |
|----------------|------------|
| Listing Office | LPT Realty |
|----------------|------------|



The trademarks MLS®, Multiple Listing Service® and the associated logos are owned by The Canadian Real Estate Association (CREA) and identify the quality of services provided by real estate professionals who are members of CREA. REALTOR®. Member of CREA and more.

Listing information last updated on October 14th, 2025 at 6:31pm PDT