

\$9,775,500 - 261224 Range Road 290, Rural Rocky View County

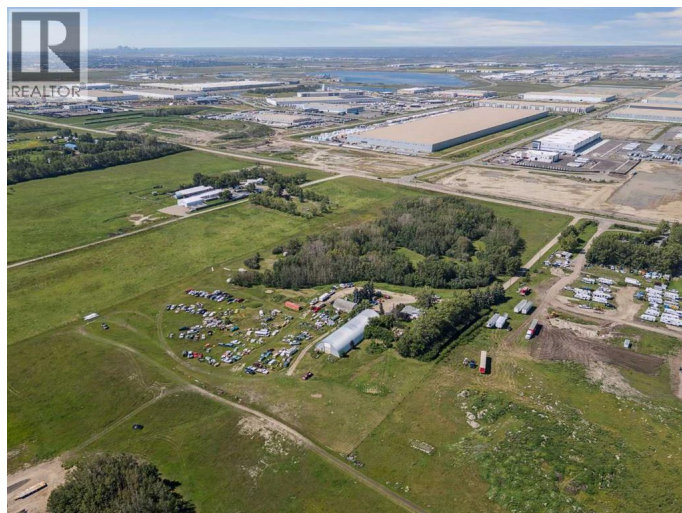
MLS® #A2251047

\$9,775,500

0 Bedroom, 0.00 Bathroom,
Vacant Land on 20.58 Acres

N/A, Rural Rocky View County, Alberta

20.58 acres located in the growing industrial community of East Balzac. Tons of potential and a great location! Currently zoned R-RUR, Included in the East Balzac ASP (SDA5), with the possibility for industrial & business uses. 2 Large Quonsets included, Larger Quonset 155' x 56', zipper lock "galvanized steel, uninsulated. Doors are 14' high x 20' wide. Smaller shop 34' x 50' heated & insulated. Property includes farm utilities: electrical, gas, septic and well. Great location, with quick access to Dwight McClennan, Metis Trail & Stoney Trail, QE2, Crossiron Drive and the Calgary International Airport. (id:6289)



Essential Information

Listing #	A2251047
Price	\$9,775,500
Bathrooms	0.00
Acres	20.58
Type	Vacant Land
Sub-Type	Freehold

Community Information

Address	261224 Range Road 290
Subdivision	N/A
City	Rural Rocky View County
Province	Alberta

Postal Code T2A6A6

Amenities

Utilities Electricity, Natural Gas

Listing Details

Listing Office CIR Realty



The trademarks MLS®, Multiple Listing Service® and the associated logos are owned by The Canadian Real Estate Association (CREA) and identify the quality of services provided by real estate professionals who are members of CREA. REALTOR®. Member of CREA and more.

Listing information last updated on October 13th, 2025 at 11:31pm PDT