

\$575,000 - 708, 3204 Rideau Place Sw, Calgary

MLS® #A2250758

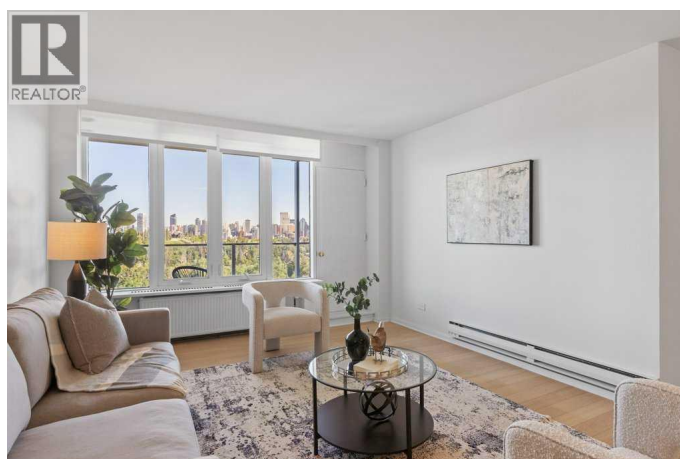
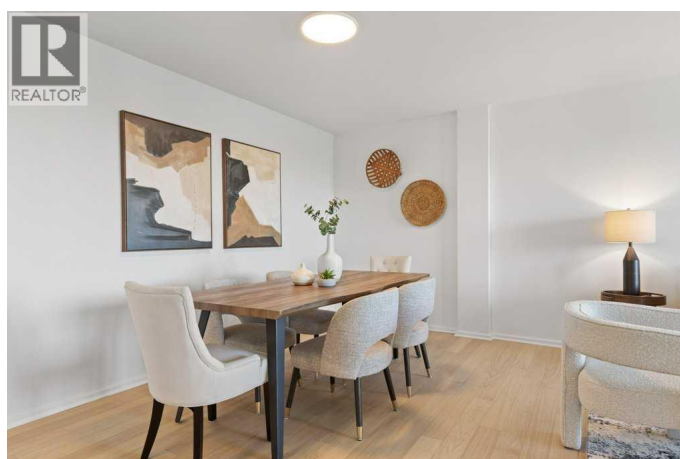
\$575,000

2 Bedroom, 1.00 Bathroom, 963 sqft

Single Family on 0.00 Acres

Rideau Park, Calgary, Alberta

Penthouse Living with Unmatched Views | Welcome to Unit 708 in Renfrew House—a rare penthouse offering perched high above Calgary in the prestigious Rideau Park community. This top-floor, 2-bedroom, 1-bathroom residence offers the perfect balance of timeless elegance, everyday functionality, and untapped potential for luxurious customization. Step inside to a sprawling open-concept living and dining area, bathed in natural light. The space invites both relaxation and entertainment, with seamless access to your private, full-length balcony showcasing uninterrupted panoramic views of the downtown skyline, the river valley, and even the distant Rocky Mountains—a front-row seat to Calgary's most spectacular sunsets. The galley-style kitchen is fully functional as-is, yet holds limitless potential. Open it up to create a gourmet showpiece—ideal for hosting gatherings, late-night conversations, or quiet mornings with a view. The primary bedroom easily accommodates king-sized furnishings and offers tranquil retreat-like comfort. The second bedroom is a versatile space—perfect as a guest room, home office, or creative studio, complete with breathtaking sightlines that make even work-from-home days feel luxurious. Additional features include secure underground heated parking, a generously sized storage unit, and access to a well-managed, impeccably maintained building with serene green surroundings and a



resort-like outdoor pool just steps away. Located mere minutes from Mission, 4th Street dining, the Elbow River pathways, and downtown Calgary, this penthouse marries the quiet elegance of Rideau Park with the pulse of urban living. (id:6289)

Built in 1955

Essential Information

Listing #	A2250758
Price	\$575,000
Bedrooms	2
Bathrooms	1.00
Square Footage	963
Acres	0.00
Year Built	1955
Type	Single Family
Sub-Type	Condominium/Strata

Community Information

Address	708, 3204 Rideau Place Sw
Subdivision	Rideau Park
City	Calgary
Province	Alberta
Postal Code	T2S1Z2

Amenities

Amenities	Park, Recreation Nearby, Schools, Shopping
Features	No Animal Home, No Smoking Home, Parking
Parking Spaces	1
Parking	Garage, Heated Garage, Underground
# of Garages	1

Interior

Appliances	Refrigerator, Dishwasher, Window Coverings
Heating	Natural gas Hot Water
Cooling	None
# of Stories	7

Exterior

Exterior	Brick, Concrete, Wood siding
Construction	Poured concrete

Listing Details

Listing Office Century 21 Bamber Realty LTD.



The trademarks MLS®, Multiple Listing Service® and the associated logos are owned by The Canadian Real Estate Association (CREA) and identify the quality of services provided by real estate professionals who are members of CREA. REALTOR®. Member of CREA and more.

Listing information last updated on October 12th, 2025 at 3:16am PDT