

\$414,800 - 36 Somervale Park Sw, Calgary

MLS® #A2250681

\$414,800

2 Bedroom, 3.00 Bathroom, 1,035 sqft

Single Family on 0.05 Acres

Somerset, Calgary, Alberta

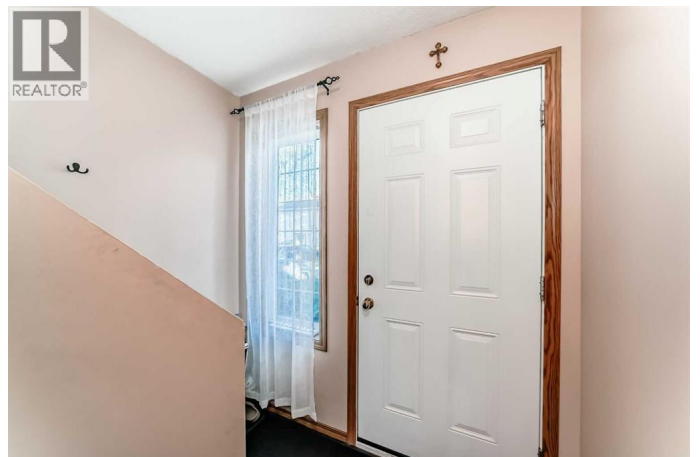
This is a great starter home especially if you're not driving!! This is the right place for you!! This lovely Town Home located in the nice community of Somerset offers you a 2 good size Bedrooms , 2 Full Bathroom in the Upper Level and 1 three piece bath in the Fully developed Basement. The Location of this unit is so great! it's just few meters walk to the Somerset C-Train Station, Banks, shops, restaurant and more!! It also offers a Single Attached Garage with an extra parking on your drive way!! You have lots of visitors!! no problem about their parking.... visitors parking is just at front and aside, they can park in the c-train station too!! What are you waiting? Call your favorite realtor and book now your showing and be the first to show!! (id:6289)

Built in 1995

Essential Information

Listing #	A2250681
Price	\$414,800
Bedrooms	2
Bathrooms	3.00
Square Footage	1,035
Acres	0.05
Year Built	1995
Type	Single Family
Sub-Type	Bare Land Condo

Community Information



Address	36 Somervale Park Sw
Subdivision	Somerset
City	Calgary
Province	Alberta
Postal Code	T2Y3J4

Amenities

Amenities	Park, Playground, Schools, Shopping
Features	See remarks, No Animal Home, No Smoking Home, Parking
Parking Spaces	2
Parking	Attached Garage
# of Garages	1

Interior

Appliances	Washer, Refrigerator, Dishwasher, Stove, Dryer, Window Coverings, Garage door opener
Heating	Forced air
Cooling	None
Fireplace	Yes
# of Fireplaces	1
# of Stories	2
Has Basement	Yes

Exterior

Exterior	Brick, Vinyl siding
Construction	Wood frame
Foundation	Poured Concrete

Listing Details

Listing Office	CIR Realty
----------------	------------



The trademarks MLS®, Multiple Listing Service® and the associated logos are owned by The Canadian Real Estate Association (CREA) and identify the quality of services provided by real estate professionals who are members of CREA. REALTOR®. Member of CREA and more.

Listing information last updated on October 14th, 2025 at 3:16pm PDT