

\$1,595,000 - 410 Elbow Park Lane Sw, Calgary

MLS® #A2250041

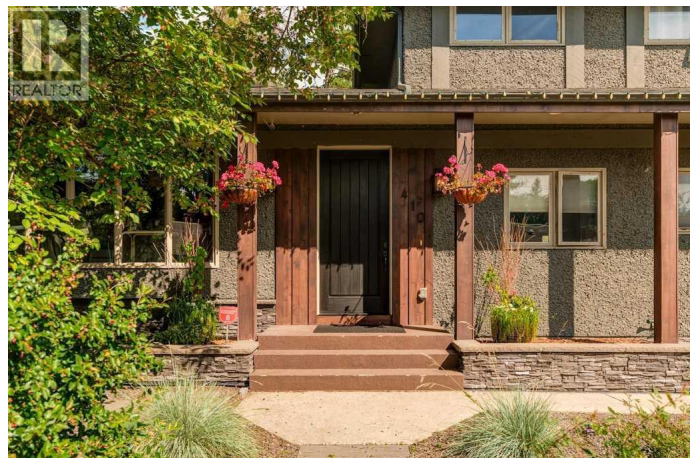
\$1,595,000

4 Bedroom, 4.00 Bathroom, 2,125 sqft

Single Family on 0.16 Acres

Elbow Park, Calgary, Alberta

Located on a sunny south and west exposed 7,178 sq. ft. corner lot in highly desirable East Elbow Park, this home was transformed through a comprehensive renovation designed to maximize natural light and create gracious living spaces. Wide-plank hardwood floors flow throughout the main and upper levels, complemented by vaulted ceilings, large skylights, and expansive south-facing windows that flood the interior with light. The living area is anchored by a sleek linear gas fireplace framed with custom built-ins, while the chef's kitchen impresses with a massive quartz island, dual-fuel 48" Wolf range with double ovens, and Sub-Zero refrigeration. A few steps down, the spacious dining area easily accommodates large gatherings and is currently styled with cozy seating around a wood-burning fireplace. A bright south-facing office/den with custom built-ins makes working from home a pleasure. Completing the main floor is a stylish powder room and a well-designed mudroom with built-in lockers to keep the family organized. Upstairs, the primary suite offers custom built-ins, a walk-in closet, and a stunning 3-piece ensuite. Two additional bedrooms—both generously sized and filled with natural light—share a 4-piece bath. The lower level features a large recreation/media area, a fourth bedroom, a 3-piece bath, and laundry. An expansive storage area of over 500 sq. ft. provides exceptional storage options. The private grounds have been carefully cultivated to



include a fantastic garden area with raised beds for vegetables, a dedicated garden for corn and root crops, and a private, low-maintenance patio with multiple seating areas. A built-in hot tub (negotiable) offers a perfect spot to unwind. For even more space for the kids, the popular East Elbow Park playground is only a few blocks away. Elbow Park is a community where neighbours know each other and parks and playgrounds are always full of life. The community centre is a hub of activity year-round, with outdoor skating rinks in the winter and clay tennis courts in the summer. It's just a short stroll to the city's best shops and restaurants along 4th Street and 17th Avenue, an easy few-kilometre commute to the downtown core, and an easy walk to the Glencoe Club. A truly unique opportunity to raise your family in one of Calgary's most sought-after neighbourhoods. Call today for your private viewing.. (id:6289)

Built in 1973

Essential Information

Listing #	A2250041
Price	\$1,595,000
Bedrooms	4
Bathrooms	4.00
Half Baths	1
Square Footage	2,125
Acres	0.16
Year Built	1973
Type	Single Family
Sub-Type	Freehold

Community Information

Address	410 Elbow Park Lane Sw
Subdivision	Elbow Park
City	Calgary

Province	Alberta
Postal Code	T2S2S6

Amenities

Amenities	Park, Playground, Recreation Nearby, Schools, Shopping
Features	Closet Organizers, No Smoking Home, Level
Parking Spaces	3
Parking	Detached Garage
# of Garages	1

Interior

Appliances	Refrigerator, Range - Gas, Dishwasher, Microwave, Hood Fan, Window Coverings, Washer/Dryer Stack-Up
Heating	Other, Forced air
Cooling	None
Fireplace	Yes
# of Fireplaces	2
# of Stories	2
Has Basement	Yes

Exterior

Exterior	Stucco
Construction	Wood frame
Foundation	Poured Concrete

Listing Details

Listing Office	RE/MAX First
----------------	--------------



The trademarks MLS®, Multiple Listing Service® and the associated logos are owned by The Canadian Real Estate Association (CREA) and identify the quality of services provided by real estate professionals who are members of CREA. REALTOR®. Member of CREA and more.

Listing information last updated on October 12th, 2025 at 9:16am PDT