

\$579,999 - 9249 Saddlebrook Drive Ne, Calgary

MLS® #A2248578

\$579,999

4 Bedroom, 4.00 Bathroom, 1,443 sqft

Single Family on 0.07 Acres

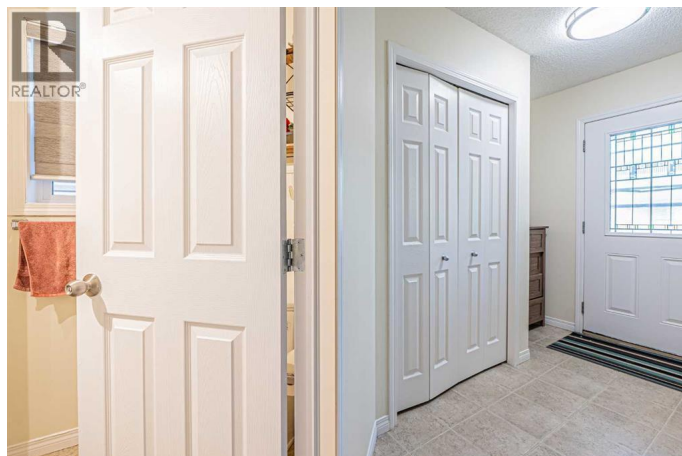
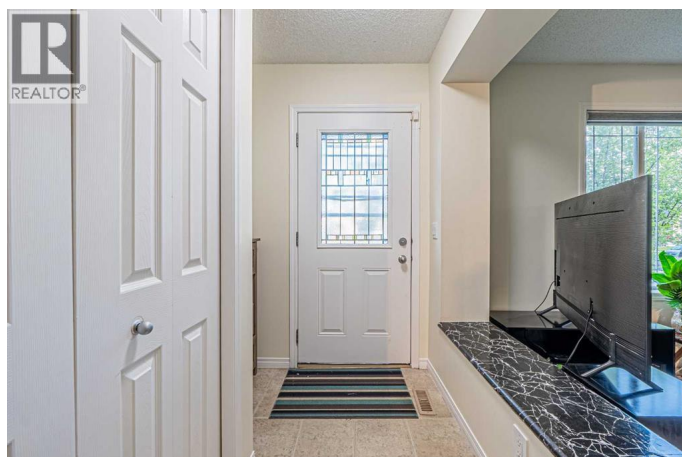
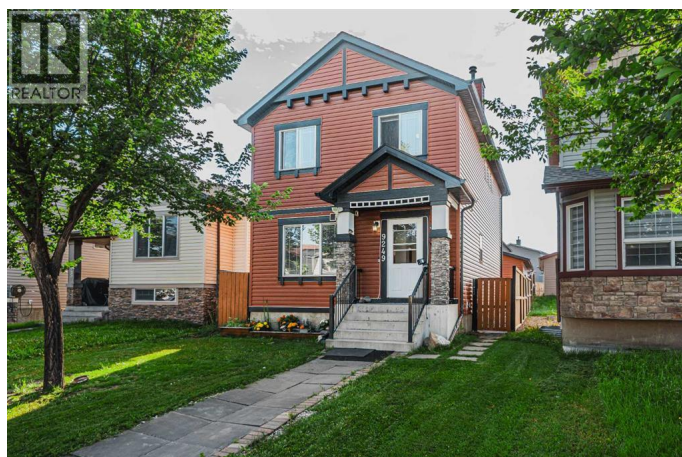
Saddle Ridge, Calgary, Alberta

Welcome to this beautifully maintained 1,442.97 sq. ft. home in the sought after community of Saddle Ridge, with an additional 650 sq. ft. of developed basement space, offering a total of 4 bedrooms and 3.5 bathrooms. This charming property features an oversized detached double garage, a fully fenced yard and a gorgeous deck perfect for entertaining. The landscaped backyard with back alley access adds both beauty and convenience. Inside, the home has been freshly painted and is move-in ready. Ideally located just steps away from schools, parks, grocery stores, bus stops and other amenities, this home combines comfort, style and a prime location—perfect for families or anyone seeking a well-kept property in a desirable neighborhood. Book your private showing Today! (id:6289)

Built in 2006

Essential Information

Listing #	A2248578
Price	\$579,999
Bedrooms	4
Bathrooms	4.00
Half Baths	1
Square Footage	1,443
Acres	0.07
Year Built	2006



Type	Single Family
Sub-Type	Freehold

Community Information

Address	9249 Saddlebrook Drive Ne
Subdivision	Saddle Ridge
City	Calgary
Province	Alberta
Postal Code	T3J5M5

Amenities

Amenities	Park, Playground, Schools, Shopping
Features	See remarks, Back lane
Parking Spaces	2
Parking	Detached Garage
# of Garages	2

Interior

Appliances	Refrigerator, Dishwasher, Stove, Hood Fan, Window Coverings, Garage door opener, Washer & Dryer
Heating	Natural gas Forced air
Cooling	None
Fireplace	Yes
# of Fireplaces	11
# of Stories	2
Has Basement	Yes

Exterior

Exterior	Stone, Vinyl siding
Exterior Features	Landscaped
Construction	Wood frame
Foundation	Poured Concrete

Listing Details

Listing Office	eXp Realty
----------------	------------



Association (CREA) and identify the quality of services provided by real estate professionals who are members of CREA. REALTOR®. Member of CREA and more.

Listing information last updated on October 14th, 2025 at 9:03pm PDT