

# \$825,000 - 302, 738 1 Avenue Sw, Calgary

MLS® #A2247479

**\$825,000**

2 Bedroom, 2.00 Bathroom, 928 sqft

Single Family on 0.00 Acres

Eau Claire, Calgary, Alberta

The Concord-Luxury on the River in Downtown Calgary! Stunning condo with breathtaking river views and a sleek open-concept layout. Gourmet kitchen with quartz countertops, POGGENPOHL cabinetry, and MIELE appliances. Elegant living area features hardwood floors and a marble-surround fireplace. Spa-inspired bath with marble walls/floors and in-floor heating. includes underground tandem parking and touchless car wash. Word-class amenities: 27/7concierge, fitness centre, social lounge, and secure access. Steps to parks, pathways, and the best of downtown living. (id:6289)

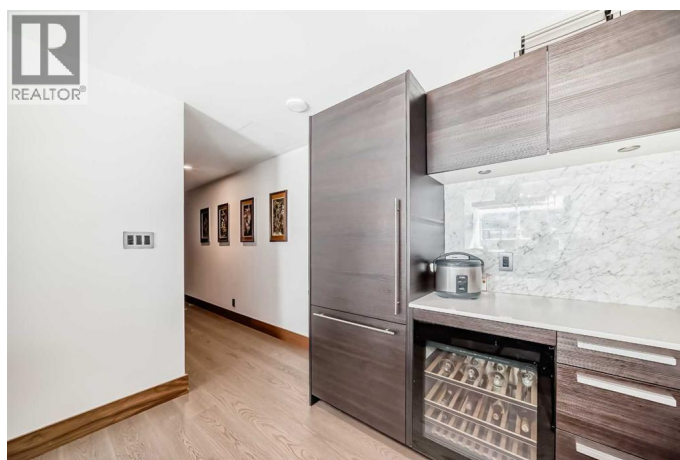
Built in 2019

## Essential Information

Listing #	A2247479
Price	\$825,000
Bedrooms	2
Bathrooms	2.00
Square Footage	928
Acres	0.00
Year Built	2019
Type	Single Family
Sub-Type	Condominium/Strata

## Community Information

Address	302, 738 1 Avenue Sw
Subdivision	Eau Claire



City	Calgary
Province	Alberta
Postal Code	T2P5G8

### Amenities

Amenities	Park, Playground, Schools, Shopping, Car Wash, Exercise Centre, Party Room
Features	Parking
Parking Spaces	2
Parking	Underground

### Interior

Appliances	Refrigerator, Cooktop - Gas, Dishwasher, Wine Fridge, Microwave Range Hood Combo, Oven - Built-In, Window Coverings, Washer & Dryer
Heating	In Floor Heating
Cooling	Central air conditioning
Fireplace	Yes
# of Fireplaces	1
# of Stories	14

### Exterior

Exterior	Aluminum siding, Concrete, Metal, Stone
Construction	Poured concrete

### Listing Details

Listing Office	RE/MAX Realty Professionals
----------------	-----------------------------



The trademarks MLS®, Multiple Listing Service® and the associated logos are owned by The Canadian Real Estate Association (CREA) and identify the quality of services provided by real estate professionals who are members of CREA. REALTOR®. Member of CREA and more.

Listing information last updated on October 13th, 2025 at 10:16pm PDT