

\$469,900 - 402, 135 Belmont Passage Sw, Calgary

MLS® #A2247302

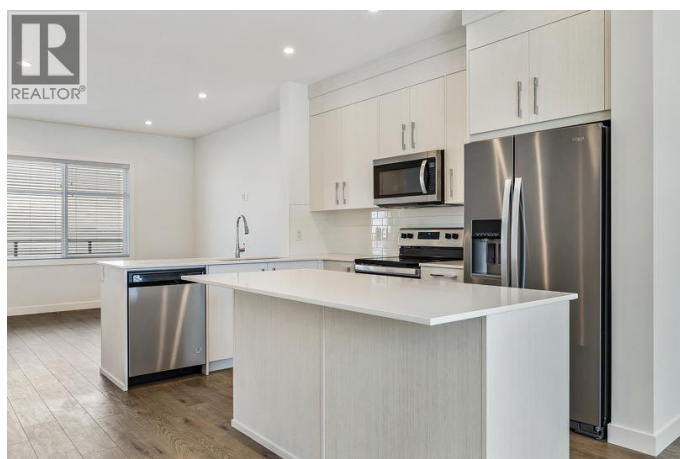
\$469,900

4 Bedroom, 3.00 Bathroom, 1,668 sqft

Single Family on 0.00 Acres

Belmont, Calgary, Alberta

Discover Briarfield, an exclusive collection of 4-bedroom townhomes built by Truman in Calgary's flourishing southwest community of Belmont. Designed with both elegance and everyday living in mind, these homes offer a refined yet comfortable lifestyle in one of the city's fastest-growing neighbourhoods. Each home at Briarfield is thoughtfully crafted for modern families and professionals alike, featuring four spacious bedrooms and two-and-a-half bathrooms across an open-concept layout. The main floor includes a versatile fourth bedroom, perfect as a home office, guest room, or quiet retreat, offering flexibility to match your lifestyle. Inside, high ceilings and luxury vinyl plank flooring create a bright, airy atmosphere, while the contemporary kitchen impresses with full-height cabinetry, soft-close drawers, stainless steel appliances, quartz countertops, and an eat-up bar. A generous pantry adds extra storage, making this space as functional as it is stylish. Upstairs, the primary bedroom serves as a peaceful sanctuary, complete with a walk-in closet and a luxurious four-piece ensuite. Two additional bedrooms, a second full bathroom, and convenient upper-floor laundry provide comfort and practicality for the whole household. Briarfield homes also include a double attached heated garage, offering both convenience and protection from Calgary's ever-changing weather. Set in the heart of Belmont, residents are just moments from playgrounds, scenic pathways,



schools, shopping, dining, and major roadways. This is a connected, community-focused neighbourhood thatâ€™s ideal for growing families and those looking for more space without compromising on access to city amenities. Briarfield is move-in readyâ€”bringing together the best of modern living, thoughtful design, and trusted Truman craftsmanship. *Photo Gallery of Similar Unit (id:6289)

Built in 2025

Essential Information

Listing #	A2247302
Price	\$469,900
Bedrooms	4
Bathrooms	3.00
Half Baths	1
Square Footage	1,668
Acres	0.00
Year Built	2025
Type	Single Family
Sub-Type	Condominium/Strata

Community Information

Address	402, 135 Belmont Passage Sw
Subdivision	Belmont
City	Calgary
Province	Alberta
Postal Code	T2X4N4

Amenities

Amenities	Park, Shopping
Features	Back lane, Parking
Parking Spaces	2
Parking	Attached Garage
# of Garages	2

Interior

Appliances	Refrigerator, Range - Electric, Dishwasher, Microwave Range Hood Combo, Window Coverings
Heating	Forced air
Cooling	None
# of Stories	3

Exterior

Exterior	Vinyl siding
Construction	Wood frame
Foundation	Poured Concrete

Listing Details

Listing Office RE/MAX First



The trademarks MLS®, Multiple Listing Service® and the associated logos are owned by The Canadian Real Estate Association (CREA) and identify the quality of services provided by real estate professionals who are members of CREA. REALTOR®. Member of CREA and more.

Listing information last updated on October 14th, 2025 at 11:16am PDT