

# \$424,800 - 909, 188 15 Avenue Sw, Calgary

MLS® #A2246243

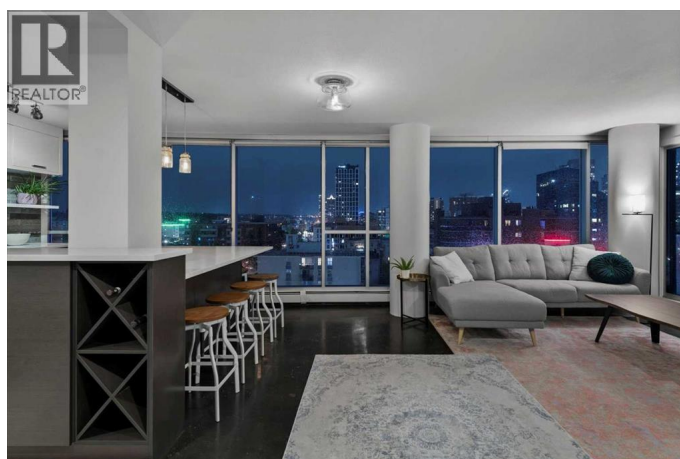
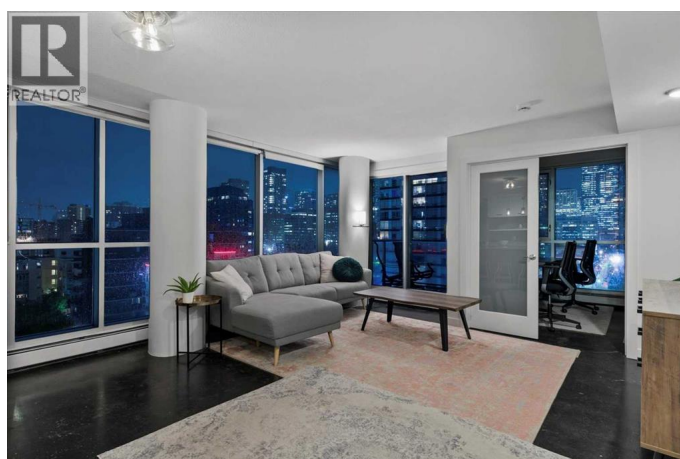
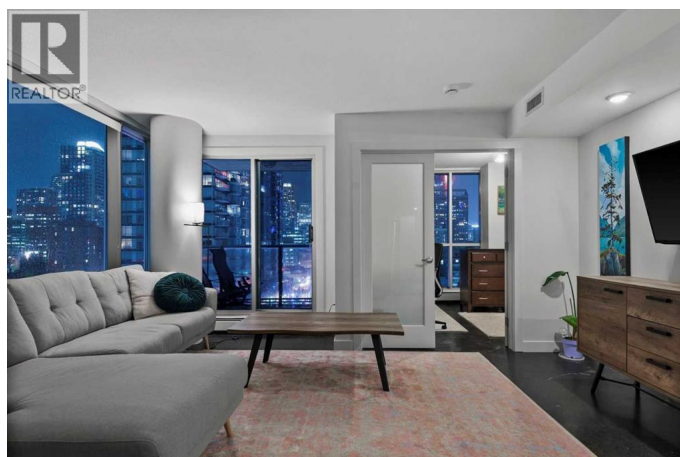
**\$424,800**

2 Bedroom, 1.00 Bathroom, 925 sqft

Single Family on 0.00 Acres

Beltline, Calgary, Alberta

FLOOR-TO-CEILING WINDOWS | WEST FACING CORNER UNIT | DOWNTOWN VIEWS | MODERN UPGRADES| Soak in the incredible downtown views from this sleek 2-bedroom condo, where floor-to-ceiling windows bring the city skyline right into your living room. Located in The Chocolate building in the heart of Victoria Park, enjoy the ultimate urban lifestyle just off 1st Street and 17th Ave offering incredible restaurants, cocktail bars, and coffee shops, all while just a short distance from the Calgary Saddledome and Stampede Park. Designed for both comfort and style, the open-concept layout features polished concrete floors and a fully upgraded kitchen complete with quartz countertops, sleek stainless steel appliances, bright cabinetry, and a large island offering plenty of space to host and entertain. The main living area is the perfect spot to relax and enjoy the city views with floor-to-ceiling windows throughout. Wake up each morning to breathtaking views of the iconic Calgary Tower, perfectly framed from your NW facing patio, the ideal spot to enjoy your morning coffee. The second bedroom offers versatile space, perfect for a comfortable home office or guest room. The updated 4-piece bathroom features a sleek modern vanity and ample storage. Additional features include in-suite laundry, a titled underground parking stall, complimentary bike storage, and a common courtyard patio for you to enjoy during these summer months. Whether you're a first-time



buyer, urban professional, or investor, this  
condo delivers exceptional value and an  
unbeatable location! \*CHECK OUT 360  
VIRTUAL TOUR\* (id:6289)

Built in 2006

### Essential Information

Listing #	A2246243
Price	\$424,800
Bedrooms	2
Bathrooms	1.00
Square Footage	925
Acres	0.00
Year Built	2006
Type	Single Family
Sub-Type	Condominium/Strata

### Community Information

Address	909, 188 15 Avenue Sw
Subdivision	Beltline
City	Calgary
Province	Alberta
Postal Code	T2R1S4

### Amenities

Amenities	Schools, Shopping, Party Room
Features	No Animal Home, No Smoking Home
Parking Spaces	1
Parking	Underground
View	View

### Interior

Appliances	Washer, Refrigerator, Dishwasher, Stove, Dryer, Microwave, Hood Fan, Window Coverings
Heating	Natural gas Baseboard heaters
Cooling	Central air conditioning
# of Stories	20

### Exterior

Exterior	Concrete, Metal
Construction	Poured concrete

## Listing Details

Listing Office	Real Broker
----------------	-------------



The trademarks MLS®, Multiple Listing Service® and the associated logos are owned by The Canadian Real Estate Association (CREA) and identify the quality of services provided by real estate professionals who are members of CREA. REALTOR®. Member of CREA and more.

Listing information last updated on October 14th, 2025 at 11:31pm PDT