

\$749,900 - 215 Belvedere Crescent Se, Calgary

MLS® #A2244298

\$749,900

4 Bedroom, 3.00 Bathroom, 1,934 sqft

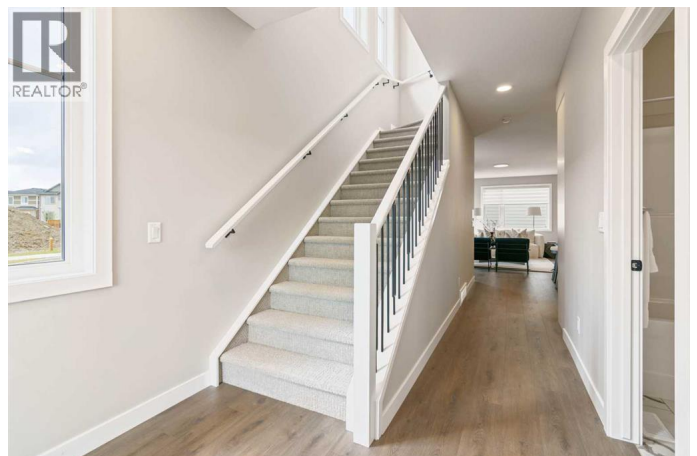
Single Family on 0.08 Acres

Belvedere, Calgary, Alberta

IMMEDIATE POSSESSION | 1,934 SQ.FT. | 4-BED | 3-BATH | SPICE KITCHEN | SIDE ENTRANCE | 9' BASEMENT | BONUS ROOM | FRONT LANDSCAPING | 2-CAR GARAGE | HARDIE BOARD SIDING | This beautiful 1,934 sq. ft. home by Crystal Creek Homes features an open-concept main floor with 9' ceilings, a sleek kitchen with quartz countertops, a large island, and a SPICE KITCHEN with a GAS RANGE and sink. The spacious great room includes an electric FIREPLACE, and the main floor also offers a bedroom and full bathroom, perfect for guests or multi-generational living. Upstairs, youâ€™™ find a BONUS ROOM, two additional bedrooms with walk-in closets, a main bath, and UPPER-FLOOR LAUNDRY. The primary bedroom boasts a walk-in closet and a 5-piece ensuite. Set on a corner lot, the home includes a DETACHED GARAGE, a durable HARDIE BOARD EXTERIOR with GEMSTONE LIGHTS, and a REAR DECK for outdoor living. Additional features include A/C, Gemstone Lights, irrigation system, a 9' BASEMENT and a SIDE ENTRANCE for added flexibility. Located near East Hills Shopping Centre, with quick access to Stoney Trail and a short drive downtown. Plus, the home comes with a NEW HOME WARRANTY for peace of mind. Book your showing today! (id:6289)

Built in 2025

Essential Information



Listing #	A2244298
Price	\$749,900
Bedrooms	4
Bathrooms	3.00
Square Footage	1,934
Acres	0.08
Year Built	2025
Type	Single Family
Sub-Type	Freehold

Community Information

Address	215 Belvedere Crescent Se
Subdivision	Belvedere
City	Calgary
Province	Alberta
Postal Code	T2A7Y5

Amenities

Amenities	Park, Playground, Schools, Shopping
Features	No Animal Home, No Smoking Home
Parking Spaces	2
Parking	Detached Garage
# of Garages	2

Interior

Appliances	Washer, Refrigerator, Range - Gas, Dishwasher, Dryer, Microwave Range Hood Combo, Hood Fan
Heating	Forced air
Cooling	None
Fireplace	Yes
# of Fireplaces	1
# of Stories	2
Basement	Separate entrance

Exterior

Exterior	Brick
Exterior Features	Landscaped
Construction	Wood frame
Foundation	Poured Concrete

Listing Details

Listing Office

Real Broker



The trademarks MLS®, Multiple Listing Service® and the associated logos are owned by The Canadian Real Estate Association (CREA) and identify the quality of services provided by real estate professionals who are members of CREA. REALTOR®. Member of CREA and more.

Listing information last updated on October 14th, 2025 at 2:01am PDT