

\$699,900 - 175 Belvedere Crescent Se, Calgary

MLS® #A2243908

\$699,900

4 Bedroom, 3.00 Bathroom, 1,927 sqft

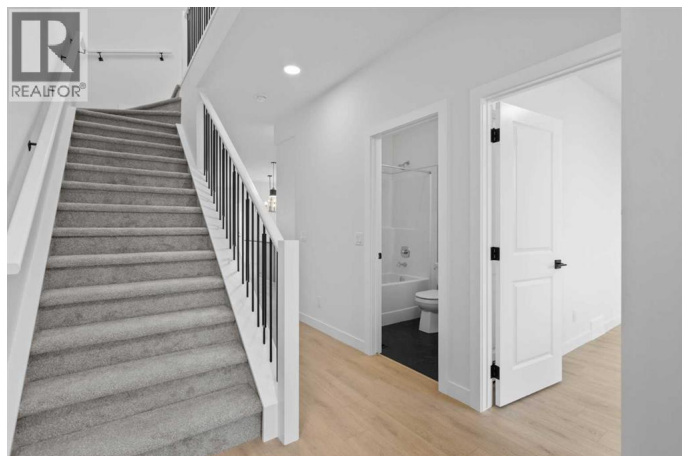
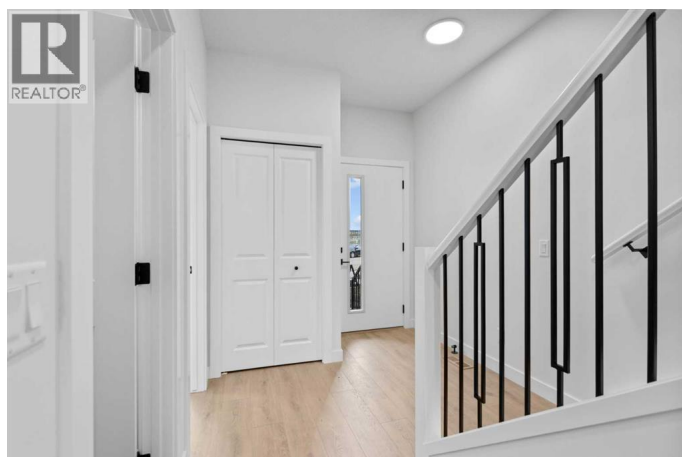
Single Family on 0.09 Acres

Belvedere, Calgary, Alberta

IMMEDIATE POSSESSION | 1,927 SQ.FT. | 4-BED | 3-BATH | SPICE KITCHEN | SIDE ENTRANCE | 9' BASEMENT | BONUS ROOM | LARGE PIE SHAPED LOT | Step into this modern & versatile new home by Crystal Creek Homes. Offering an open-concept main floor with 9' ceilings, its sleek kitchen features quartz countertops, a large island, and a SPICE KITCHEN with a GAS RANGE and sink. A spacious great room with an electric FIREPLACE adds to the welcoming atmosphere. The main floor also includes a bedroom and a full bathroom, perfect for guests or multi-generational living. Upstairs, you'll find a BONUS ROOM, 3 bedrooms, each with walk-in closets, a main bath, and convenient UPPER-FLOOR LAUNDRY. The primary bedroom offers a luxurious 5-piece ensuite. Set on a large pie-shaped lot, the home features a durable HARDIE BOARD EXTERIOR and a REAR DECK for outdoor living. The 9' BASEMENT and SEPARATE SIDE ENTRANCE provides future legal suite potential (subject to approval and permitting by the City). Located near East Hills Shopping Centre, with quick access to Stoney Trail and a short drive downtown. This home has everything you need! Book your showing today before it's gone. (id:6289)

Built in 2025

Essential Information



Listing #	A2243908
Price	\$699,900
Bedrooms	4
Bathrooms	3.00
Square Footage	1,927
Acres	0.09
Year Built	2025
Type	Single Family
Sub-Type	Freehold

Community Information

Address	175 Belvedere Crescent Se
Subdivision	Belvedere
City	Calgary
Province	Alberta
Postal Code	T2A7Y5

Amenities

Amenities	Park, Playground, Schools, Shopping
Features	No Animal Home, No Smoking Home
Parking Spaces	2
Parking	Parking Pad

Interior

Appliances	Washer, Refrigerator, Range - Gas, Dishwasher, Dryer, Microwave Range Hood Combo, Hood Fan
Heating	Forced air
Cooling	None
Fireplace	Yes
# of Fireplaces	1
# of Stories	2
Basement	Separate entrance

Exterior

Exterior Features	Landscaped
Construction	Wood frame
Foundation	Poured Concrete

Listing Details

Listing Office

Real Broker



The trademarks MLS®, Multiple Listing Service® and the associated logos are owned by The Canadian Real Estate Association (CREA) and identify the quality of services provided by real estate professionals who are members of CREA. REALTOR®. Member of CREA and more.

Listing information last updated on October 14th, 2025 at 1:41pm PDT