

# \$310,000 - 14 Savanna Passage Ne, Calgary

MLS® #A2243869

**\$310,000**

2 Bedroom, 1.00 Bathroom, 574 sqft

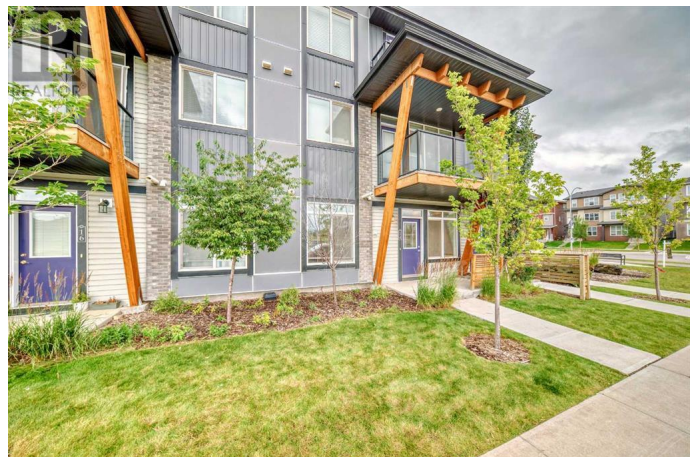
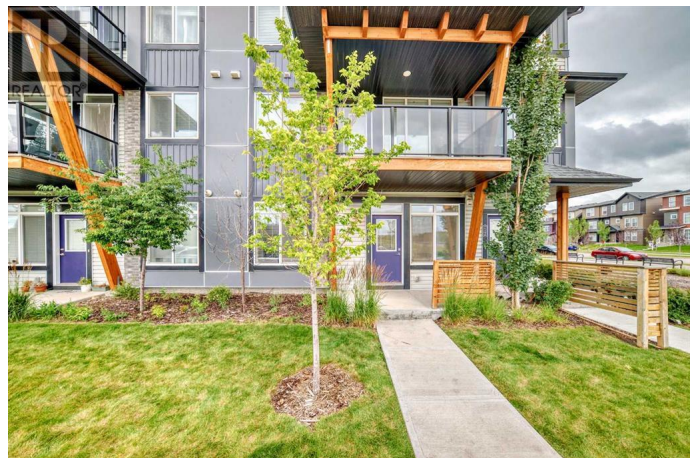
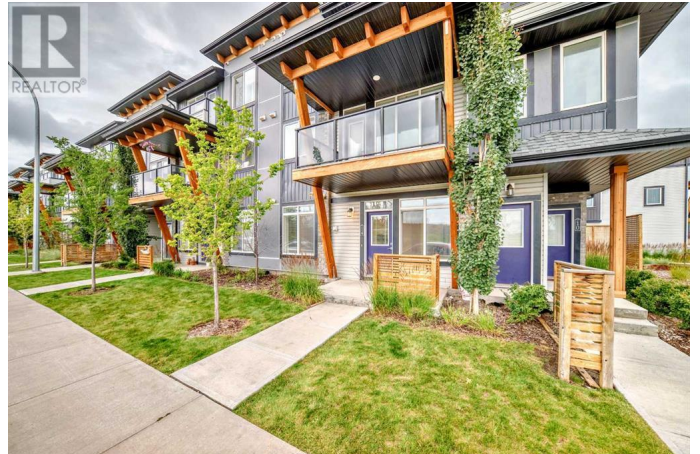
Single Family on 0.00 Acres

Saddle Ridge, Calgary, Alberta

Modern Townhome in Saddle Ridge at Essential Savanna This bright and stylish 2-bedroom townhome offers a smart, open-concept layout with wide plank flooring and upscale finishes throughout. The kitchen features quartz countertops, soft-close cabinetry, stainless steel appliances, and a spacious pantry. Oversized windows and 9-foot ceilings fill the home with natural light, while deep window sills add charm and functionality. About the Community Located in the vibrant and growing neighbourhood of Saddle Ridge, this home offers convenience and connection. Residents enjoy access to a variety of amenities including nearby parks, playgrounds, schools, and the popular Genesis Centre—home to fitness facilities, sports fields, a library, and community events. There are also several shopping plazas nearby with grocery stores, restaurants, and essential services. Saddle Ridge offers excellent transit options, including an LRT station, and quick access to major routes like Stoney Trail and Metis Trail, making commuting simple. A Smart Investment Situated in a well-managed complex with low condo fees and a strong reserve fund, this property provides great value and peace of mind—perfect for first-time buyers or investors. Book your private showing today! (id:6289)

Built in 2021

## Essential Information



Listing #	A2243869
Price	\$310,000
Bedrooms	2
Bathrooms	1.00
Square Footage	574
Acres	0.00
Year Built	2021
Type	Single Family
Sub-Type	Condominium/Strata
Style	Loft

### Community Information

Address	14 Savanna Passage Ne
Subdivision	Saddle Ridge
City	Calgary
Province	Alberta
Postal Code	T3J0Y2

### Amenities

Amenities	Playground, Shopping
Features	Other
Parking	Other

### Interior

Appliances	Washer, Refrigerator, Dishwasher, Stove, Dryer
Heating	Forced air
Cooling	None
# of Stories	1

### Exterior

Exterior	Asphalt, Vinyl siding
Construction	Wood frame
Foundation	Poured Concrete

### Listing Details

Listing Office	MaxWell Capital Realty
----------------	------------------------



The trademarks MLS®, Multiple Listing Service® and the associated logos are owned by The Canadian Real Estate Association (CREA) and identify the quality of services provided by real estate professionals who are members of CREA. REALTOR®. Member of CREA and more.

Listing information last updated on October 14th, 2025 at 2:16am PDT