

\$680,000 - 220, 20 Silverado Crest Park Sw, Calgary

MLS® #A2243342

\$680,000

1 Bedroom, 2.00 Bathroom, 1,271 sqft
Single Family on 0.08 Acres

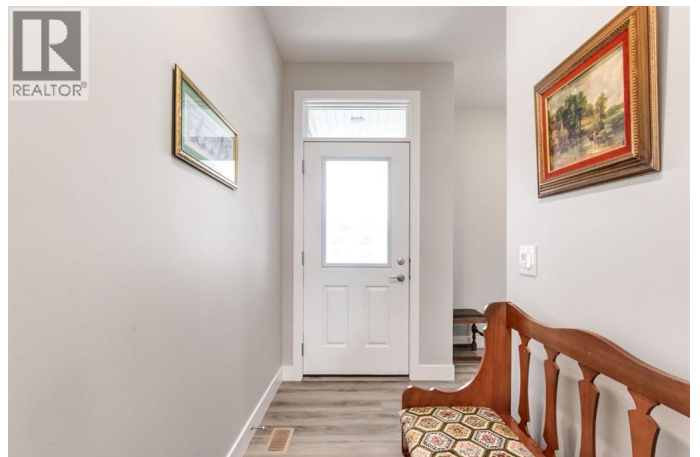
Silverado, Calgary, Alberta

**** OPEN HOUSE Saturday OCT 4 from 11-1PM ***** Meet Silvia in Silverado - an attached bungalow with a sweet 2-car garage and 1,271 sq. ft. of stylish single-level living. The open-concept layout features a chef's kitchen with central island, stainless steel appliances, and ample cabinetry, flowing into a cozy living room anchored by a striking stone gas fireplace. The private primary suite offers a spa-inspired 5-piece ensuite with soaker tub, dual sinks, walk-in shower, and a generous walk-through closet. A versatile den provides the perfect spot for a home office or hobby space, while a sleek powder room adds guest convenience. Downstairs, a full basement awaits your ideas with potential for two additional bedrooms, a bath, and a large recreation area. With condo-managed living, enjoy low-maintenance, lock-and-leave confidence. Ideally located in Silverado, Silvia is just minutes from shopping, dining, and major roadways, with Spruce Meadows and community pathways nearby. More than a home, Silvia is ready for her next chapter—waiting for new owners to love her and make her their own. (id:6289)

Built in 2021

Essential Information

Listing #	A2243342
Price	\$680,000



Bedrooms	1
Bathrooms	2.00
Half Baths	1
Square Footage	1,271
Acres	0.08
Year Built	2021
Type	Single Family
Sub-Type	Bare Land Condo
Style	Bungalow

Community Information

Address	220, 20 Silverado Crest Park Sw
Subdivision	Silverado
City	Calgary
Province	Alberta
Postal Code	T2X4L3

Amenities

Amenities	Golf Course, Park, Playground, Schools, Shopping
Features	VisitAble
Parking Spaces	4
Parking	Attached Garage, Concrete
# of Garages	2

Interior

Appliances	Washer, Refrigerator, Range - Electric, Dishwasher, Dryer, Microwave, Hood Fan, Window Coverings, Garage door opener
Heating	Other, Forced air
Cooling	None
Fireplace	Yes
# of Fireplaces	1
# of Stories	1

Exterior

Exterior Features	Landscaped, Lawn
Construction	Wood frame
Foundation	Poured Concrete

Listing Details

Listing Office

Real Broker



The trademarks MLS®, Multiple Listing Service® and the associated logos are owned by The Canadian Real Estate Association (CREA) and identify the quality of services provided by real estate professionals who are members of CREA. REALTOR®. Member of CREA and more.

Listing information last updated on October 14th, 2025 at 1:46pm PDT