

\$691,000 - 12, On Highway 12, Rural Lacombe County

MLS® #A2241818

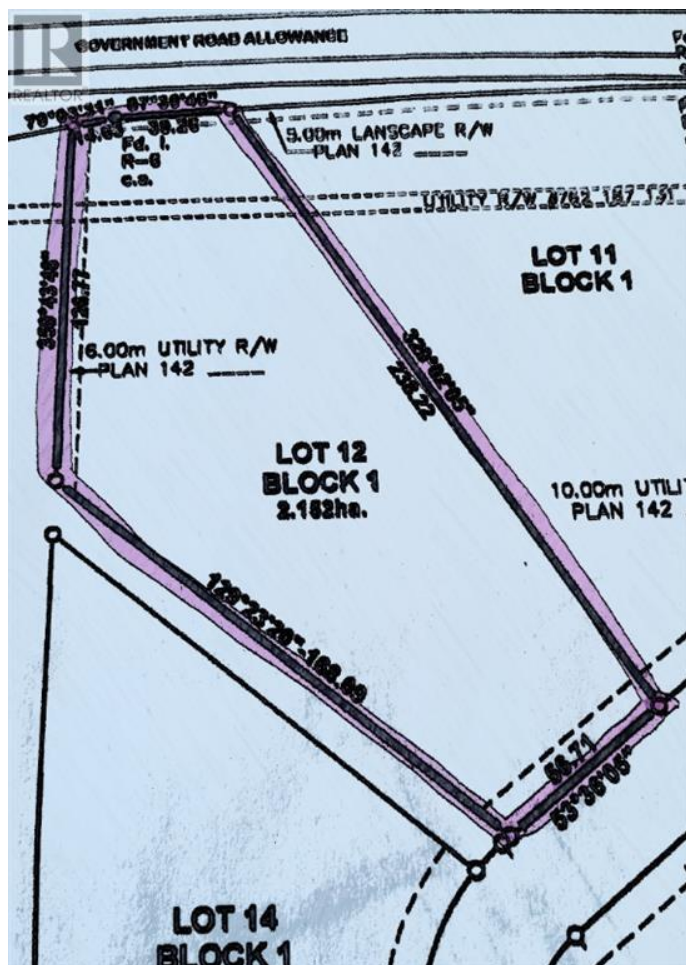
\$691,000

0 Bedroom, 0.00 Bathroom,
Vacant Land on 5.32 Acres

Iron Rail Business Park, Rural Lacombe
County, Alberta

5.32 ACRES - located east of Lacombe in the
Iron Rail Business Park on Highway #12.

Property is rough graded with black dirt
removed ready for pit-run/gravel. Underground
power and natural gas are to the property line.
Buyer will be responsible for private water well
& septic system. There will be no road bans in
effect in the Park. Zoning is Business Industrial
District which is to provided for a broad range
of commercial and industrial uses. This lot has
great direct exposure to Highway #12. Good
location and price per acre. (id:6289)



Essential Information

Listing #	A2241818
Price	\$691,000
Bathrooms	0.00
Acres	5.32
Type	Vacant Land
Sub-Type	Freehold

Community Information

Address	12, On Highway 12
Subdivision	Iron Rail Business Park
City	Rural Lacombe County
Province	Alberta
Postal Code	T4L2N2

Listing Details

Listing Office

RE/MAX real estate central alberta



The trademarks MLS®, Multiple Listing Service® and the associated logos are owned by The Canadian Real Estate Association (CREA) and identify the quality of services provided by real estate professionals who are members of CREA. REALTOR®. Member of CREA and more.

Listing information last updated on October 12th, 2025 at 11:46pm PDT