

\$269,550 - 308, 10 Shawnee Hill Sw, Calgary

MLS® #A2241532

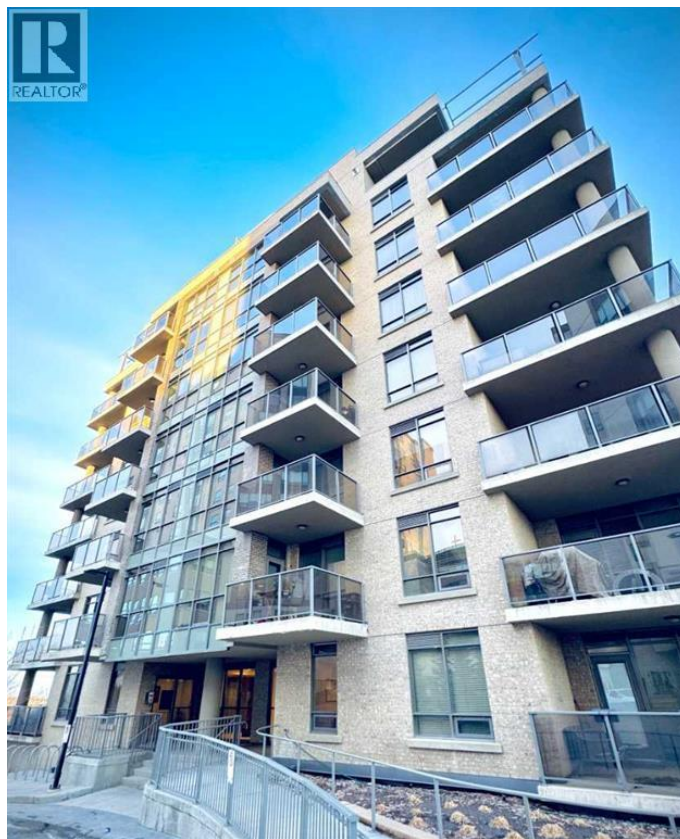
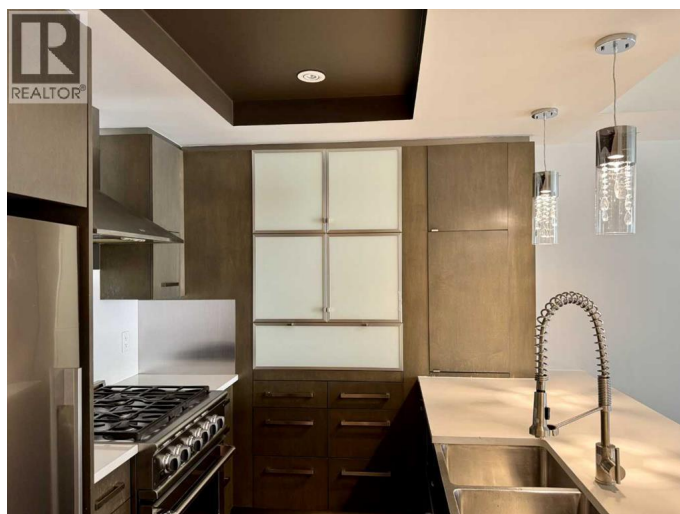
\$269,550

1 Bedroom, 1.00 Bathroom, 613 sqft

Single Family on 0.00 Acres

Shawnee Slopes, Calgary, Alberta

INVESTOR ALERT - Priced to sell, low entry cost, high rental demand, and strong long-term upside! Welcome to Highbury Tower where modern comfort meets upscale design and unbeatable convenience. With concrete construction, this building offers superior sound insulation, enhanced fire safety, and lasting durability for a quieter, more secure living experience. This bright and thoughtfully designed 1-bedroom + den condo offers 9-foot ceilings, floor-to-ceiling windows, and a quiet west-facing exposure with views toward Fish Creek Park. The chef-inspired kitchen features flat-panel soft-close cabinetry, under-cabinet lighting, quartz countertops, and a large island with chic pendant lighting. The premium Fisher & Paykel appliance package includes a 5-burner gas range, chimney-style hood fan, new Bosch dishwasher, and full-size refrigerator. A walk-through closet leads from the spacious bedroom to a stylish 4-piece ensuite with a deep soaker tub. The flexible den is perfect for a home office or creative space. Enjoy in-suite laundry, central A/C, and a covered NW-facing balcony with a gas line for summer BBQs and the occasional deer sighting. Building amenities include a fitness center, party lounge, secure FOB access, heated underground parking, storage locker, visitor parking, and bike storage. Located steps from Fish Creekâ€™s Lacombe LRT, close to Fish Creek Park, St. Maryâ€™s University, shopping, dining, and major routes. Whether you're a first-time buyer, downsizer, or



investor, this home offers a rare blend of style, function, and location in one of Calgary’s most desirable communities. (id:6289)

Built in 2009

Essential Information

Listing #	A2241532
Price	\$269,550
Bedrooms	1
Bathrooms	1.00
Square Footage	613
Acres	0.00
Year Built	2009
Type	Single Family
Sub-Type	Condominium/Strata

Community Information

Address	308, 10 Shawnee Hill Sw
Subdivision	Shawnee Slopes
City	Calgary
Province	Alberta
Postal Code	T2Y0K5

Amenities

Amenities	Park, Playground, Schools, Shopping
Features	No Animal Home, No Smoking Home, Parking
Parking Spaces	1
Parking	Underground

Interior

Appliances	Refrigerator, Range - Gas, Dishwasher, Microwave, Hood Fan, Window Coverings, Washer/Dryer Stack-Up
Heating	Central heating
Cooling	Central air conditioning
# of Stories	9

Exterior

Exterior	Brick, Concrete
----------	-----------------

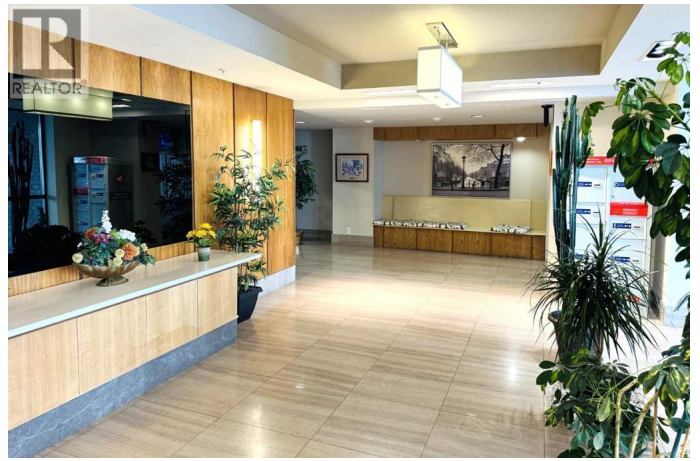
Construction

Poured concrete

Listing Details

Listing Office

RE/MAX iRealty Innovations



The trademarks MLS®, Multiple Listing Service® and the associated logos are owned by The Canadian Real Estate Association (CREA) and identify the quality of services provided by real estate professionals who are members of CREA. REALTOR®. Member of CREA and more.

Listing information last updated on October 15th, 2025 at 3:16am PDT