

\$799,900 - 72 Treeline Common Sw, Calgary

MLS® #A2239391

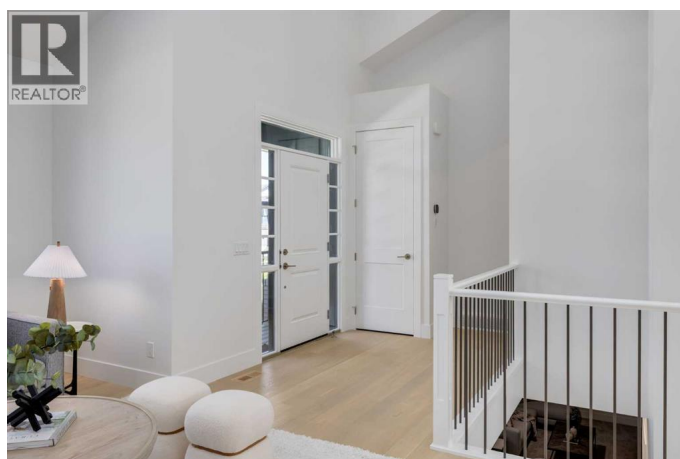
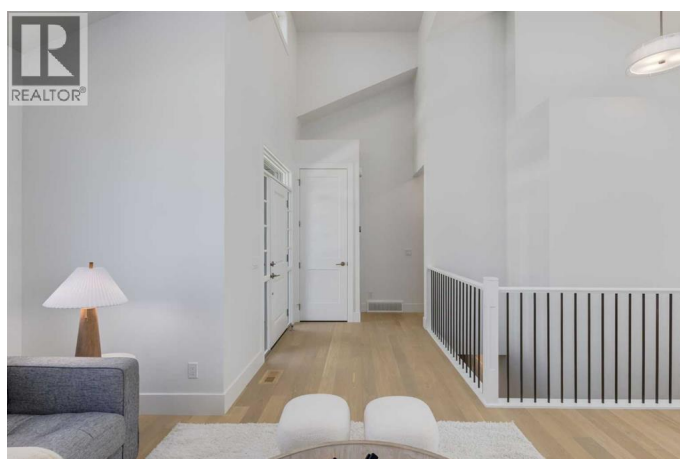
\$799,900

2 Bedroom, 3.00 Bathroom, 1,211 sqft

Single Family on 0.07 Acres

Alpine Park, Calgary, Alberta

Welcome to The Schaffer, a beautifully designed bungalow that combines thoughtful layout, eye-catching curb appeal, and timeless design elements. Set on a wide, premium lot facing a lush green space, this home stands out with its smart board and brick exterior that delivers instant charm and character. Inside, vaulted ceilings create a sense of openness and light throughout the main living area. The stone-surround electric fireplace adds warmth and style, anchoring the spacious living room that flows into the heart of the home—the kitchen. This space is a true showstopper, featuring crisp white cabinetry paired with a bold olive island, sleek white quartz counters, a modern wood box hoodfan, and a stunning stacked hammered subway tile backsplash. A window above the sink brings in natural light, while upgraded stainless steel appliances, including a gas cooktop, complete the chef-inspired setup. An oversized cabinet-style pantry offers both function and design. The main floor primary bedroom is a private retreat with a generous 5-piece ensuite that includes dual sinks, a stand-alone shower, and a deep soaker tub. Wrought iron railings guide you to the fully finished basement, where you'll find a spacious recreation room, an additional bedroom, and a full 4-piece bathroom—perfect for guests, teens, or a home office setup. With its wide frontage and carefully designed layout, this home offers a sense of space and flow that's hard to find. Built with a wider frontage than most, this



home offers a unique layout that feels open yet intimate, with incredible curb appeal and a quiet setting directly across from a beautifully landscaped green space. Whether youâ€™re relaxing on the front porch, gathering in the open kitchen, or hosting downstairs, The Schaffer offers an elevated take on bungalow living with the perfect blend of comfort, design, and location. Located in Calgaryâ€™s emerging Alpine Park community, this home is part of a new urbanist neighborhood that emphasizes walkability, connection, and nature. Designed with front porches, tree-lined boulevards, and rear lane garages, Alpine Park encourages a strong sense of community. Residents enjoy quick access to lush green spaces, pedestrian-only pathways, gathering areas, and future amenities in Alpine Village, a mixed-use hub that will feature shops, cafÃ©s, and community events. With easy access to the new Southwest Ring Road, downtown is just 15 minutes away, and the mountains are within quick reach, making this a truly unique and vibrant place to call home.

(id:6289)

Built in 2023

Essential Information

Listing #	A2239391
Price	\$799,900
Bedrooms	2
Bathrooms	3.00
Half Baths	1
Square Footage	1,211
Acres	0.07
Year Built	2023
Type	Single Family
Sub-Type	Bare Land Condo
Style	Bungalow

Community Information

Address	72 Treeline Common Sw
Subdivision	Alpine Park
City	Calgary
Province	Alberta
Postal Code	T2Y0S3

Amenities

Amenities	Park, Playground, Shopping
Features	Back lane, PVC window, No Animal Home, No Smoking Home, Level, Gas BBQ Hookup, Parking
Parking Spaces	2
Parking	Attached Garage
# of Garages	2

Interior

Appliances	Refrigerator, Cooktop - Gas, Dishwasher, Microwave, Oven - Built-In, Hood Fan, Garage door opener
Heating	Natural gas Forced air
Cooling	None
Fireplace	Yes
# of Fireplaces	1
# of Stories	1
Has Basement	Yes

Exterior

Exterior	Brick
Construction	Wood frame
Foundation	Poured Concrete

Listing Details

Listing Office	Real Broker
----------------	-------------



The trademarks MLS®, Multiple Listing Service® and the associated logos are owned by The Canadian Real Estate Association (CREA) and identify the quality of services provided by real estate professionals who are members of CREA. REALTOR®. Member of CREA and more.

Listing information last updated on October 14th, 2025 at 11:46pm PDT