

# \$280,000 - 604, 650 10 Street Sw, Calgary

MLS® #A2238558

## \$280,000

1 Bedroom, 1.00 Bathroom, 771 sqft

Single Family on 0.00 Acres

Downtown West End, Calgary, Alberta

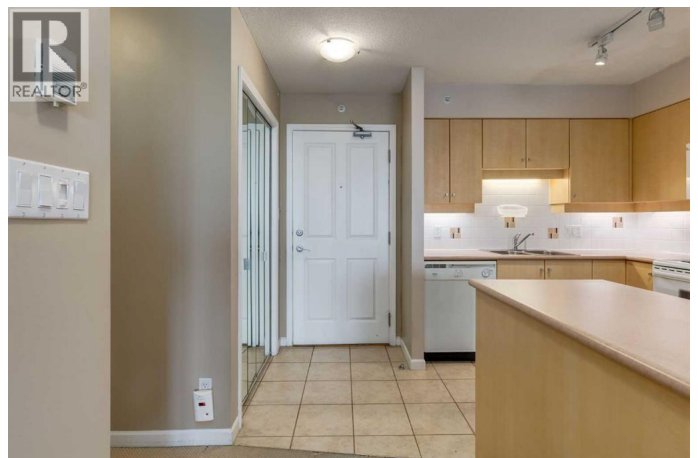
Welcome to the Axxis building located in the heart of West Downtown. This unit features an open floorplan with carpet and tile flooring throughout. A large kitchen with plenty of upper and lower cabinetry and an island. Dining area and living room with a cozy corner fireplace. Large bedroom, a den that could be used as an office space and full 4pc bathroom. Assigned secured underground parking, storage locker and insuite laundry. Concrete building providing a quiet living and slight views of the Bow River. Amenities include a fitness centre and a party/recreation room. Just steps away from LRT Station, restaurants, shopping, pathways and the Bow River. Don't miss out on this opportunity. Make your private showing today. (id:6289)

Built in 2000

## Essential Information

Listings #	A2238558
Price	\$280,000
Bedrooms	1
Bathrooms	1.00
Square Footage	771
Acres	0.00
Year Built	2000
Type	Single Family
Sub-Type	Condominium/Strata

## Community Information



Address	604, 650 10 Street Sw
Subdivision	Downtown West End
City	Calgary
Province	Alberta
Postal Code	T2P5G4

### Amenities

Amenities	Park, Playground, Schools, Shopping, Exercise Centre, Party Room
Features	Parking
Parking Spaces	1
Parking	Underground

### Interior

Appliances	Washer, Refrigerator, Dishwasher, Stove, Dryer, Microwave Range Hood Combo, Window Coverings
Heating	Baseboard heaters
Cooling	None
Fireplace	Yes
# of Fireplaces	1
# of Stories	25

### Exterior

Exterior	Brick, Concrete, Stucco
Construction	Poured concrete
Foundation	Poured Concrete

### Listing Details

Listing Office	RE/MAX First
----------------	--------------



The trademarks MLS®, Multiple Listing Service® and the associated logos are owned by The Canadian Real Estate Association (CREA) and identify the quality of services provided by real estate professionals who are members of CREA. REALTOR®. Member of CREA and more.

Listing information last updated on October 14th, 2025 at 3:01am PDT