

\$1,250,000 - 44 Panatella Rise Nw, Calgary

MLS® #A2236760

\$1,250,000

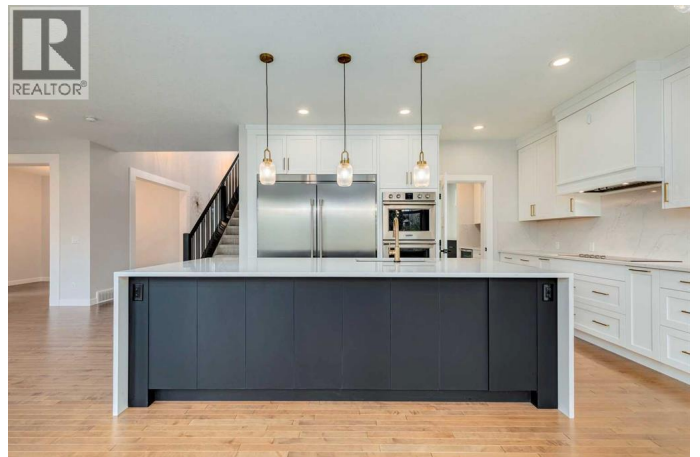
4 Bedroom, 4.00 Bathroom, 2,851 sqft

Single Family on 0.11 Acres

Panorama Hills, Calgary, Alberta

Panorama Hills - 44 Panatella Rise NW:

Welcome to this fully renovated 2 storey home, built by Landmark Homes. This 2-storey home features over 4,000 square feet of beautifully developed living space, a total of 4 bedrooms (3 above grade), 3.5 bathrooms, and a double attached garage. The main floor showcases rich hardwood flooring throughout and an open-to-above level foyer. The chef-inspired kitchen features a stunning waterfall island with storage, quartz backsplash, and Frigidaire Professional stainless steel appliances - including a built-in fridge/freezer, double wall ovens, induction cooktop, and custom millwork hood fan. Enjoy the bright breakfast nook with a built-in buffet, and the added convenience of a walk-through pantry with a butler's pantry complete with a beverage fridge, microwave, and lots of storage. The living room features a cozy gas fireplace and opens onto the backyard via sliding patio doors. A formal dining room, private home office with west-facing windows, stylish 2-piece powder room, and a spacious mudroom with a built-in bench and cabinets complete the main level. Upstairs, you'll find a luxurious primary bedroom with dual walk-in closets and a spa-like 5-piece ensuite with heated floors, dual vanities, a soaking tub, and a curbless glass shower. Two additional generous bedrooms, a large bonus room with west-facing windows, a 4-piece main bathroom, and a well-equipped laundry room with a quartz folding counter and Samsung



washer/dryer add to the upper level's functionality. The fully finished basement offers a spacious family room and recreation, a wet bar with custom cabinetry, a 4th bedroom with dual closets, and a 3-piece bathroom - ideal for guests or growing families. Enjoy outdoor living in the landscaped backyard featuring a composite deck, gas BBQ hookup, and direct access to a scenic walking path that leads to a vibrant pond, playground, basketball court, picnic area, and nearby ravines. This beautifully updated home was extensively renovated in 2023, with new shingles and gutters completed in 2025. Nestled on a quiet street in the prestigious Panatella Estates area of Panorama Hills, this home offers an unbeatable location just steps from schools (Buffalo Rubbing Stone Elementary, Captain Nichola Goddard Junior High, and North Trail High School), parks, shopping, and the Vivo Recreation Centre - with quick access to Stoney Trail. Don't miss your chance to own this stunning family home - call today for more info! (id:6289)

Built in 2012

Essential Information

Listing #	A2236760
Price	\$1,250,000
Bedrooms	4
Bathrooms	4.00
Half Baths	1
Square Footage	2,851
Acres	0.11
Year Built	2012
Type	Single Family
Sub-Type	Freehold

Community Information

Address	44 Panatella Rise Nw
---------	----------------------

Subdivision	Panorama Hills
City	Calgary
Province	Alberta
Postal Code	T3K0W9

Amenities

Amenities	Park, Playground, Schools, Shopping, Other
Features	Other, No neighbours behind, Gas BBQ Hookup
Parking Spaces	4
Parking	Attached Garage
# of Garages	2

Interior

Appliances	Washer, Refrigerator, Water softener, Dishwasher, Dryer, Microwave, Freezer, Oven - Built-In, Hood Fan, Window Coverings, Garage door opener, Water Heater - Tankless, Cooktop - Induction
Heating	Forced air
Cooling	Central air conditioning
Fireplace	Yes
# of Fireplaces	1
# of Stories	2
Has Basement	Yes

Exterior

Exterior	Stone, Stucco
Exterior Features	Landscaped
Construction	Wood frame
Foundation	Poured Concrete

Listing Details

Listing Office	CIR Realty
----------------	------------



The trademarks MLS®, Multiple Listing Service® and the associated logos are owned by The Canadian Real Estate Association (CREA) and identify the quality of services provided by real estate professionals who are members of CREA. REALTOR®. Member of CREA and more.

Listing information last updated on October 13th, 2025 at 8:47pm PDT