

# \$2,098,000 - 1001, 300 Meredith Road Ne, Calgary

MLS® #A2236509

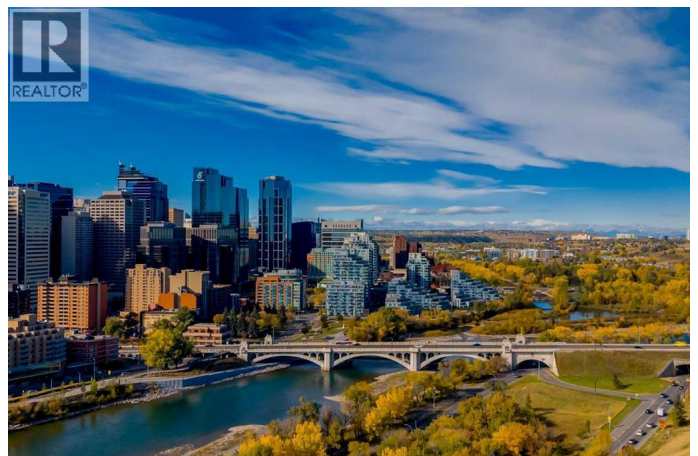
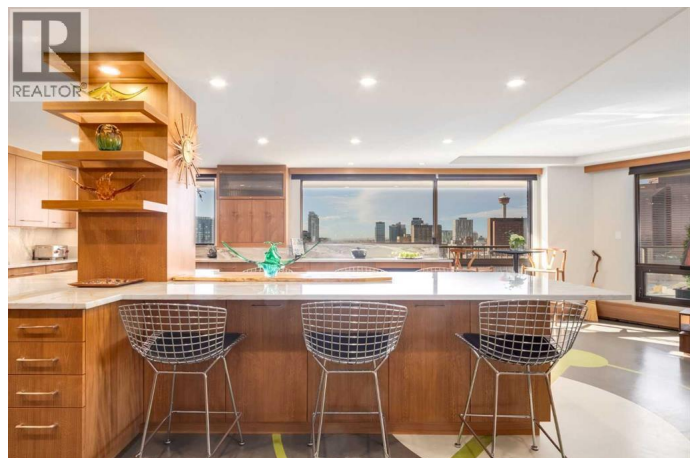
**\$2,098,000**

2 Bedroom, 3.00 Bathroom, 2,407 sqft

Single Family on 0.00 Acres

Crescent Heights, Calgary, Alberta

This extraordinary two-bedroom Penthouse embodies modern luxury, sophisticated design, and rare artistic intention. Offering over 4,300 SF of interior and exterior living space with sweeping views of the city skyline and river valley, there is no other condominium of this magnitude that has ever been offered for sale in Calgary. Every detail reflects meticulous craftsmanship and artistry. The interiors were guided by curated design direction from Robert Gray, while the signature custom flooring inlay was personally envisioned and created by the seller. Inspired by sacred geometry, the design begins in the kitchen and flows gracefully into the living space, guiding the eye toward panoramic south-facing views. This bespoke flooring adds a subtle yet powerful sense of movement, harmony, and connection. A serene glass sunroom creates the most incredible relaxation space, while a 360-degree rotating wood-burning fireplace anchors the two living rooms. Additional artistic touches include a vesica pisces design in the powder room – a timeless symbol of balance, harmony, and creation – infusing the home with depth and meaning. The expansive open-concept kitchen is elegantly appointed with Grey Elm cabinetry, quartz countertops, a chef's island designed as a professional workstation, and premium Wolf, ASKO, and Subzero appliances seamlessly integrated into the design. The primary suite is a true retreat, featuring bespoke closet solutions, remote blinds (in the primary suite only), and an



exquisite steam shower framed by expansive windows that capture the city and mountain views. Outdoor living is elevated by a two-season screened-in patio and a generous 1,920 SF terrace, with an additional 400 SF of enclosed outdoor living space – perfect for entertaining or quiet reflection. The original building was architecturally designed by Rick Balbi, truly ahead of its time with its incredible terraced design. Built with solid concrete and brick in 1979, Holly Park is a testament to lasting quality – fully modernized in recent years with a new roof, HVAC, hot water tank, railings, pool upgrades, and more. Many of the current residents will never leave this building as there truly is nothing like it. The stupendous views, seasonal amenities and floor plan size are irreplaceable. Note: Seller will accept BITCOIN for currency payment. (id:6289)

Built in 1979

**Essential Information**

Listing #	A2236509
Price	\$2,098,000
Bedrooms	2
Bathrooms	3.00
Half Baths	1
Square Footage	2,407
Acres	0.00
Year Built	1979
Type	Single Family
Sub-Type	Condominium/Strata

**Community Information**

Address	1001, 300 Meredith Road Ne
Subdivision	Crescent Heights
City	Calgary
Province	Alberta
Postal Code	T2E7A8

## Amenities

Amenities	Park, Shopping, Exercise Centre, Guest Suite, Swimming, Recreation Centre, Sauna, Whirlpool
Features	Closet Organizers, No Smoking Home, Guest Suite, Sauna, Gas BBQ Hookup, Parking
Parking Spaces	2
Parking	Underground
View	View

## Interior

Appliances	Washer, Refrigerator, Dishwasher, Wine Fridge, Dryer, Microwave, Oven - Built-In, Hot Water Instant, Window Coverings, Cooktop - Induction
Heating	Electric Forced air
Cooling	See Remarks
Fireplace	Yes
# of Fireplaces	2
# of Stories	10

## Exterior

Exterior	Brick, Concrete
Construction	Poured concrete
Foundation	Poured Concrete

## Listing Details

Listing Office	Coldwell Banker Mountain Central
----------------	----------------------------------



The trademarks MLS®, Multiple Listing Service® and the associated logos are owned by The Canadian Real Estate Association (CREA) and identify the quality of services provided by real estate professionals who are members of CREA. REALTOR®. Member of CREA and more.

Listing information last updated on October 13th, 2025 at 10:46am PDT