

\$3,800,000 - 55, 59, 63, 201, 203, 205, 65 Edmonton Trail Ne, Calgary

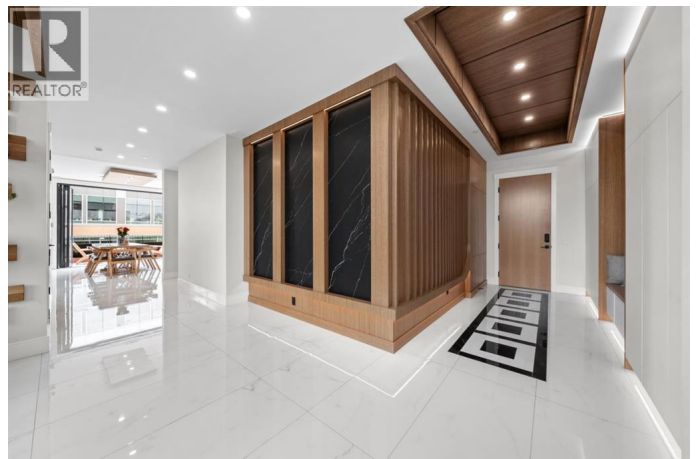
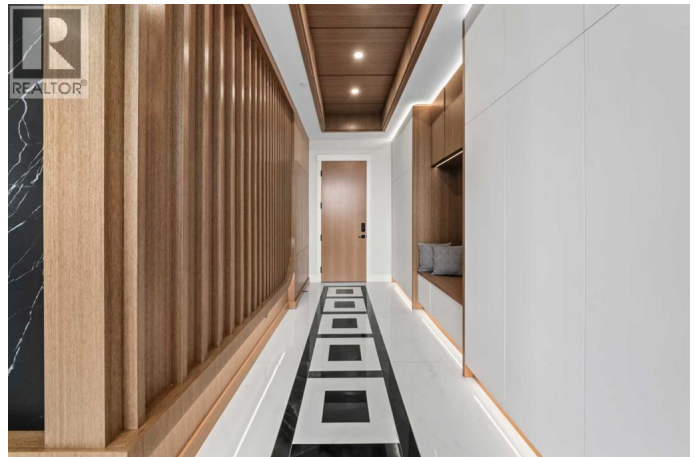
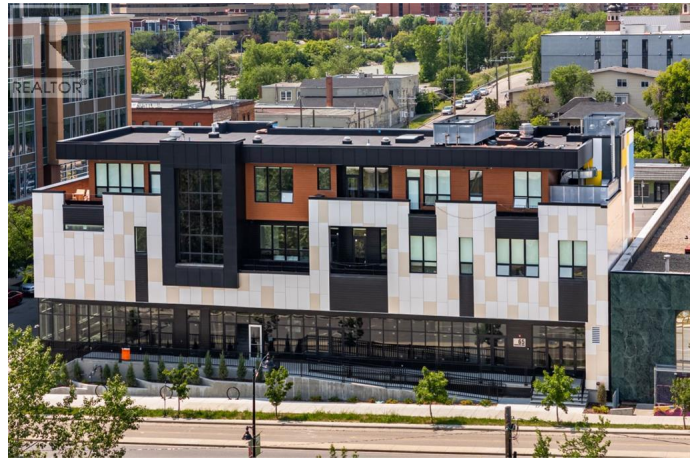
MLS® #A2235084

\$3,800,000

0 Bedroom, 0.00 Bathroom, 12,259 sqft
Multi-family on 0.16 Acres

Bridgeland/Riverside, Calgary, Alberta

Live the Unrepeatable. Built to Inspire. Made to Endure. In the vibrant heart of Calgary, a space where architecture becomes art and every sq. ft. tells a story of vision, permanence & purpose. This isn't simply real estate, it's a place where design, lifestyle & investment meet under 1 roof. BOTH AN EXCLUSIVE RESIDENTIAL HAVEN & A STRONG COMMERCIAL ASSET, this landmark development seamlessly brings together 3 BESPOKE LUXURY RESIDENCES, A FLAGSHIP WESTERN FUSION RESTAURANT & A 15-STALL HEATED PARKADE. Each are crafted not just for function but for lasting impact. Occupying the full expanse of the commercial level is a 175-seat Western fusion restaurant, currently under construction & anchored by a renewable 10-year lease. Far more than a tenant, this culinary destination infuses the building with vibrancy, consistent foot traffic, and prestige, elevating its presence in Calgary's urban fabric & ensuring long-term income. Constructed from concrete, steel and engineered wood, the building stands both solid & modern. Inside the craftsmanship speaks volumes. VAULTED CEILINGS lift the eye. IMPORTED UKRANIAN HARDWOOD grounds the space in warmth and authenticity. BRAZILIAN STONE surfaces bring elemental beauty to kitchens & baths, harmonizing function with finesse. At the heart of the



premier residence lies a breathtaking 4-tier waterfall wall, LED-lit and gently cascading within a feature designed to elevate air quality & ambiance. A full-height folding glass wall blurs the line between interior & exterior, creating a fluid, immersive connection to nature that transforms everyday living into something extraordinary. The building's climate systems are fully air-controlled with centralized units, high-efficiency heat pumps & precision-zoned systems which allow the property to remain perfectly temperate in every season. In-floor heating warms kitchens & baths, while TRIPLE-GLAZED WINDOWS ensure acoustic calm & thermal balance. A smart dual-loop HVAC system reallocates energy across the structure for optimized performance and reduced consumption, all contributing to one of the most energy-efficient buildings in Alberta. True luxury also means infrastructure that protects and empowers. This property is equipped with 24/7 intelligent fire monitoring, fire-rated ACM cladding, and concrete emergency exits that exceed commercial code. SNOW-MELTING PATIOS & HEATED DRIVEWAYS ensure year-round accessibility, while a 1200 A transformer powers 11 EV charging stations, preparing the building for a forward-focused electrified future. Surrounding it all is a discreet network of 32 AI-powered, night-vision security cameras, providing round-the-clock protection without intrusion. From each all-season composite balcony, Calgary's skyline unfolds in full panorama. It's a view reserved for those who dream large & demand the exceptional. You don't just tour a property like this, you witness it! Schedule your private experience before it becomes someone else's! (id:6289)

Built in 2024

Essential Information

Listing #	A2235084
Price	\$3,800,000
Bathrooms	0.00
Square Footage	12,259
Acres	0.16
Year Built	2024
Type	Multi-family
Sub-Type	Freehold
Style	Multi-level

Community Information

Address	55, 59, 63, 201, 203, 205, 65 Edmonton Trail Ne
Subdivision	Bridgeland/Riverside
City	Calgary
Province	Alberta
Postal Code	T2E8S3

Amenities

Features	See remarks, Elevator, Gas BBQ Hookup
Parking Spaces	17
Parking	Underground

Interior

Appliances	Washer, Refrigerator, Oven - Electric, Water softener, Cooktop - Electric, Cooktop - Gas, Gas stove(s), Range - Gas, Dishwasher, Stove, Oven, Dryer, Microwave, Freezer, Garburator, Oven - Built-In, Hood Fan, Hot Water Instant, Window Coverings, Garage door opener, Washer & Dryer, Water Heater - Gas, Cooktop - Induction
Heating	See remarks
Cooling	See Remarks
Fireplace	Yes
# of Fireplaces	7
# of Stories	5

Exterior

Exterior	Composite Siding, See Remarks
Construction	Steel frame

Listing Details

Listing Office	Century 21 Bamber Realty LTD.
----------------	-------------------------------



The trademarks MLS®, Multiple Listing Service® and the associated logos are owned by The Canadian Real Estate Association (CREA) and identify the quality of services provided by real estate professionals who are members of CREA. REALTOR®. Member of CREA and more.

Listing information last updated on October 13th, 2025 at 3:16am PDT