

\$456,000 - 6423 28 Avenue Ne, Calgary

MLS® #A2232271

\$456,000

2 Bedroom, 2.00 Bathroom, 859 sqft

Single Family on 0.11 Acres

Pineridge, Calgary, Alberta

ATTENTION HANDYMEN & FLIPPERS!

SUNNY SOUTH-FACING BACKYARD |

STEPS TO THE PARK | LARGE

LOT Welcome to the highly sought-after

community of Pineridge! This spacious 4-level

split offers over 2,000 SQFT of developed

living space, featuring 2 bedrooms, 1.5

bathrooms, and endless potential for

customization. The main level offers a

functional layout with an open-concept kitchen,

breakfast bar, and direct access to the

east-facing deck from the dining

roomâ€”perfect for enjoying your morning

coffee in the sun. Upstairs, youâ€™ll find two

generous bedrooms, including a larger primary

suite with a walk-in closet, and a full bathroom.

The lower levels feature a massive family

room and rec room with large, bright windows

that flood the space with natural

sunlightâ€”ideal for entertaining or future

development. Additional features include,

Heated single attached garage, Gas BBQ

hookup and Newer furnace & on-demand hot

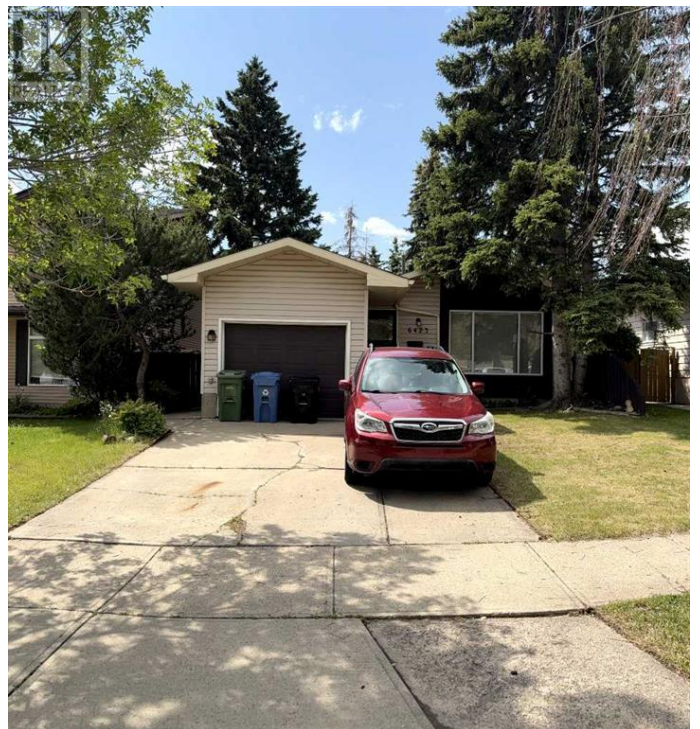
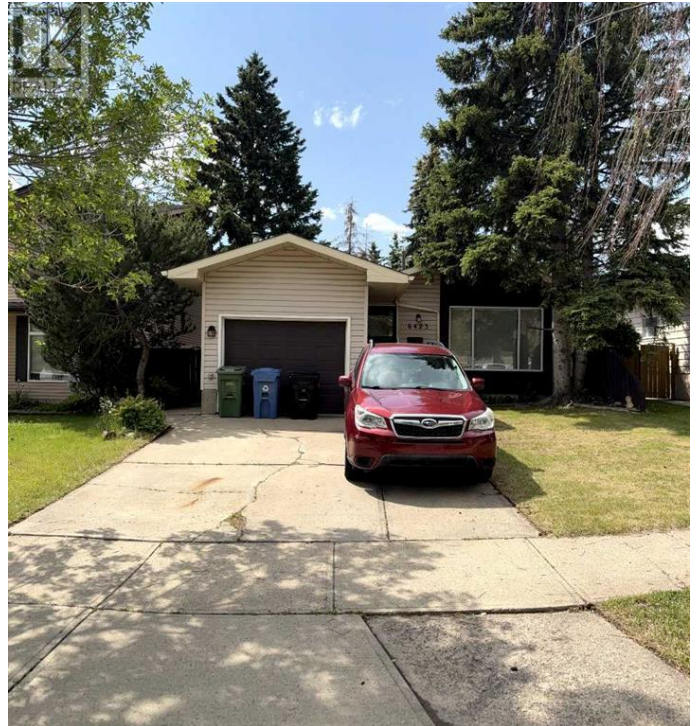
water system. This is a perfect opportunity for

investors, renovators, or anyone looking to

build equity in a fantastic location. Donâ€™t

miss outâ€”schedule your showing today!

(id:6289)



Built in 1978

Essential Information

Listing #

A2232271

Price	\$456,000
Bedrooms	2
Bathrooms	2.00
Half Baths	1
Square Footage	859
Acres	0.11
Year Built	1978
Type	Single Family
Sub-Type	Freehold
Style	4 Level

Community Information

Address	6423 28 Avenue Ne
Subdivision	Pineridge
City	Calgary
Province	Alberta
Postal Code	T1Y4S2

Amenities

Amenities	Park, Playground, Schools, Shopping
Features	See remarks, Level
Parking Spaces	3
Parking	Attached Garage, Garage, Heated Garage
# of Garages	2

Interior

Appliances	Washer, Refrigerator, Stove, Dryer, Window Coverings
Heating	Forced air
Cooling	None
Fireplace	Yes
# of Fireplaces	1
Has Basement	Yes

Exterior

Exterior	Vinyl siding, Wood siding
Exterior Features	Lawn
Foundation	Poured Concrete

Listing Details

Listing Office

Royal LePage Blue Sky



The trademarks MLS®, Multiple Listing Service® and the associated logos are owned by The Canadian Real Estate Association (CREA) and identify the quality of services provided by real estate professionals who are members of CREA. REALTOR®. Member of CREA and more.

Listing information last updated on October 14th, 2025 at 10:46am PDT