

# \$309,000 - 303, 1000 Somervale Court Sw, Calgary

MLS® #A2231788

**\$309,000**

2 Bedroom, 1.00 Bathroom, 857 sqft

Single Family on 0.00 Acres

Somerset, Calgary, Alberta

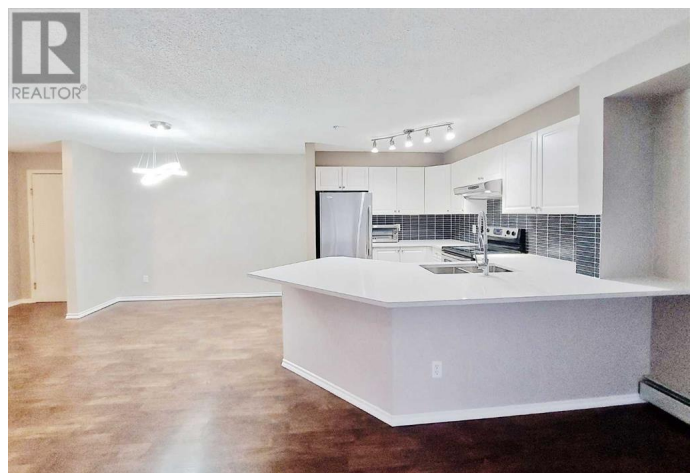
SOMERSET CROSSING!! BRIGHT, ELEGANT, SPACIOUS UNIT ON 3RD FLOOR. 2 ASSIGNED PARKING STALLS #37 & 38. This West-Facing Condo Has Been Lovingly Cared For And Offers a Bright, Open Floor Plan. Generous Kitchen with New countertop backsplash and appliance, Upgraded Hood Fan and Backsplash. RICH LOOKING LAMINATE FLOORING. New Light Fixtures Throughout Home. Spacious Covered Balcony w/Gas Line to BBQ. In-Suite Laundry. All Bedrooms Spacious. View Off West-Facing Room. Only Steps To Transit, LRT, Fabulous Shopping And All Amenities. WELCOME HOME!! Condo fees include electricity, water and heat. Call today for private viewing (id:6289)

Built in 2001

## Essential Information

Listing #	A2231788
Price	\$309,000
Bedrooms	2
Bathrooms	1.00
Square Footage	857
Acres	0.00
Year Built	2001
Type	Single Family
Sub-Type	Condominium/Strata

## Community Information



Address	303, 1000 Somervale Court Sw
Subdivision	Somerset
City	Calgary
Province	Alberta
Postal Code	T2Y4K4

### Amenities

Amenities	Playground, Schools, Shopping
Features	Elevator, PVC window, No Animal Home, No Smoking Home, Parking
Parking Spaces	2

### Interior

Appliances	Refrigerator, Dishwasher, Stove, Hood Fan, Window Coverings, Washer/Dryer Stack-Up
Heating	Baseboard heaters, Hot Water
Cooling	None
Fireplace	Yes
# of Fireplaces	1
# of Stories	4

### Exterior

Exterior	Stone, Vinyl siding
Construction	Wood frame

### Listing Details

Listing Office	Royal LePage Blue Sky
----------------	-----------------------



The trademarks MLS®, Multiple Listing Service® and the associated logos are owned by The Canadian Real Estate Association (CREA) and identify the quality of services provided by real estate professionals who are members of CREA. REALTOR®. Member of CREA and more.

Listing information last updated on October 14th, 2025 at 3:16pm PDT