

\$69,900 - #5, 660023 Range Road 224, Rural Athabasca County

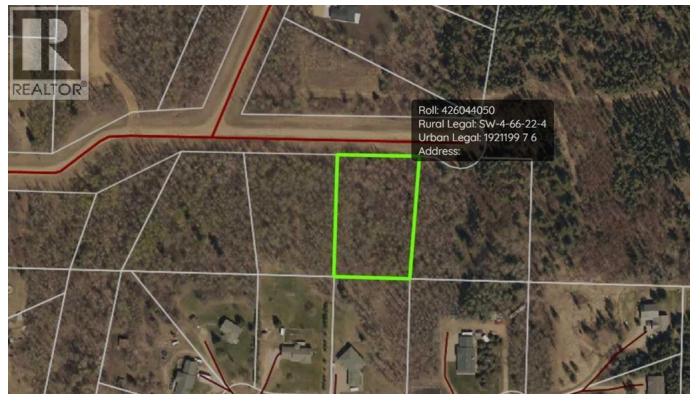
MLS® #A2230146

\$69,900

0 Bedroom, 0.00 Bathroom,
Vacant Land on 1.59 Acres

N/A, Rural Athabasca County, Alberta

Only 3 lots remain. This Lot 5 is 1.59 acres, fully treed, and is tucked in towards the back of the subdivision. Just off pavement. Buy a lot in the gorgeous Copper Ridge Estates in Athabasca County, with no requirement to build. Build now, build in the future, or flip it when everything is sold out. The homes already built in the neighborhood create a tidy and peaceful place to live and thrive. Copper Ridge is less than 5 minutes south of Athabasca and is paved to the entrance of the subdivision. Its on the banks of the Tawatinaw Valley, and, as such, is a beautiful rolling haven. (id:6289)



Essential Information

Listing #	A2230146
Price	\$69,900
Bathrooms	0.00
Acres	1.59
Type	Vacant Land
Sub-Type	Freehold

Community Information

Address	#5, 660023 Range Road 224
Subdivision	N/A
City	Rural Athabasca County
Province	Alberta



Postal Code T9S2A8

Listing Details

Listing Office ROYAL LEPAGE COUNTY REALTY



The trademarks MLS®, Multiple Listing Service® and the associated logos are owned by The Canadian Real Estate Association (CREA) and identify the quality of services provided by real estate professionals who are members of CREA. REALTOR®. Member of CREA and more.

Listing information last updated on October 21st, 2025 at 6:01am PDT