

\$119,000 - 86, 50228 Range Road 204, Rural Beaver County

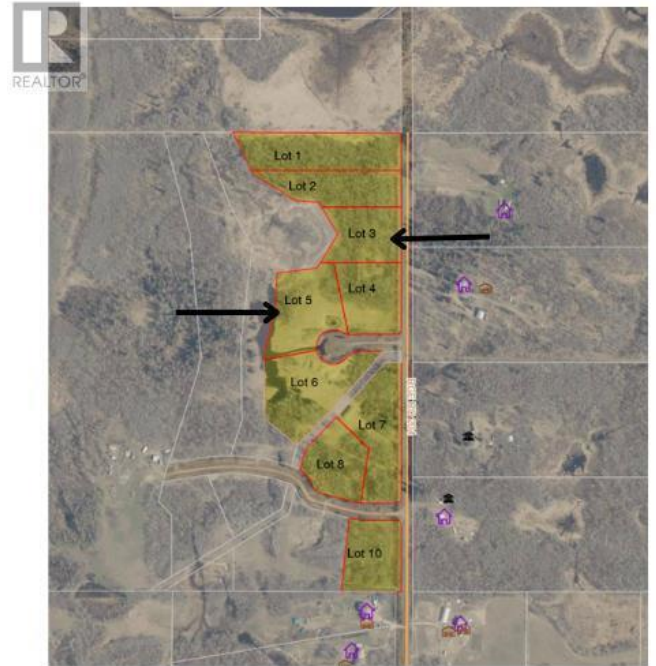
MLS® #A2228179

\$119,000

0 Bedroom, 0.00 Bathroom,
Vacant Land on 3.04 Acres

N/A, Rural Beaver County, Alberta

Picturesque Acreage Lot Available! With over 3 acres this remarkable and rare piece of land could be just what you've been waiting for. Easy commute to Sherwood Park, Edmonton, and Camrose. Absolutely breath taking property close to Miquelon Lake And Miquelon Hills Golf Course won't last long. Power and Gas available. (id:6289)



Essential Information

Listing #	A2228179
Price	\$119,000
Bathrooms	0.00
Acres	3.04
Type	Vacant Land
Sub-Type	Freehold

Community Information

Address	86, 50228 Range Road 204
Subdivision	N/A
City	Rural Beaver County
Province	Alberta
Postal Code	T0B4A0

Listing Details

Listing Office CIR Realty



The trademarks MLS®, Multiple Listing Service® and the associated logos are owned by The Canadian Real Estate Association (CREA) and identify the quality of services provided by real estate professionals who are members of CREA. REALTOR®. Member of CREA and more.

Listing information last updated on October 21st, 2025 at 6:01am PDT