

\$1,950,000 - 1912 26a Street Sw, Calgary

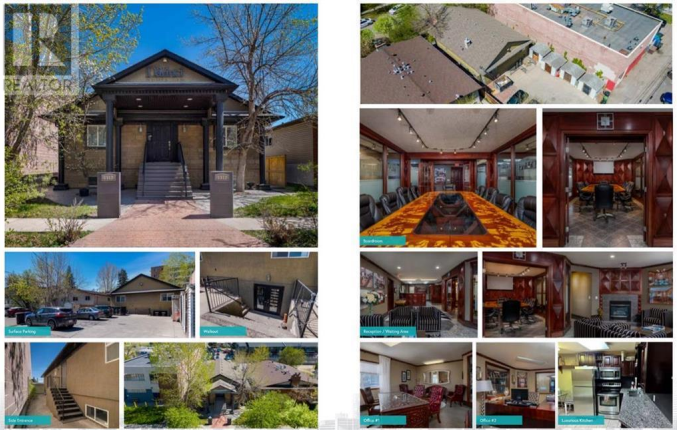
MLS® #A2227810

\$1,950,000

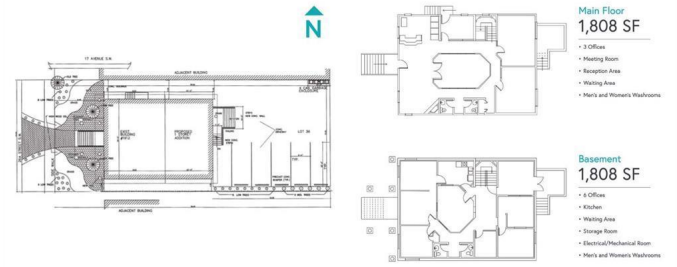
0 Bedroom, 0.00 Bathroom, 1,808 sqft
Office on 0.14 Acres

Killarney/Glengarry, Calgary, Alberta

Click Brochure Link for more details** First time ever to market as a commercial offering. The original structure was built in 1900 and then fully redeveloped and expanded in size in 1999. Pride of ownership is evident throughout and the interior design and layout provides a high end client experience well suited for any type of owner/occupier professional service office including law, accounting and wealth management. The building is well parked with both onsite staff parking and ample free street parking for clients and visitors. Despite only being a four minute drive from Calgary's downtown core, the property is located in a very convenient and non-congested area just off of 17th Avenue SW. Additionally, the property is only a 7 minute walk to the Shaganappi Point LRT station. (id:6289)



Floor Plans



Built in 1900

Essential Information

Listing #	A2227810
Price	\$1,950,000
Bathrooms	0.00
Square Footage	1,808
Acres	0.14
Year Built	1900
Type	Office
Sub-Type	Freehold

Community Information

Address	1912 26a Street Sw
Subdivision	Killarney/Glengarry
City	Calgary
Province	Alberta
Postal Code	T3E2B7

Listing Details

Listing Office Honestdoor Inc.



The trademarks MLS®, Multiple Listing Service® and the associated logos are owned by The Canadian Real Estate Association (CREA) and identify the quality of services provided by real estate professionals who are members of CREA. REALTOR®. Member of CREA and more.

Listing information last updated on October 14th, 2025 at 5:33am PDT