

# \$2,982,000 - Range Road 281 & Township Road 252, Rural Rocky View County

---

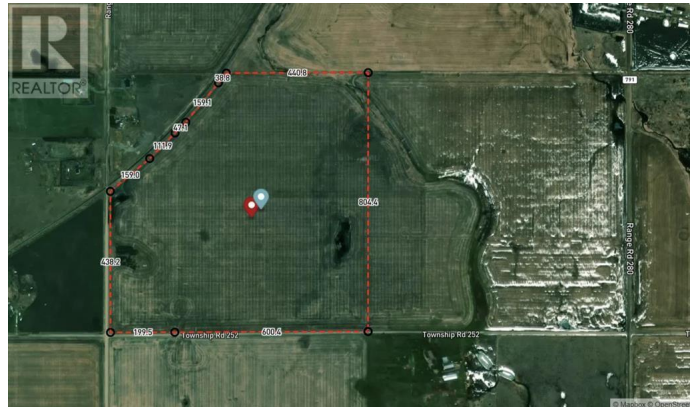
MLS® #A2226246

**\$2,982,000**

0 Bedroom, 0.00 Bathroom,  
Vacant Land on 142.63 Acres

N/A, Rural Rocky View County, Alberta

Incredible opportunity to own 143 Acres farm land located in Rocky View County with close location to the Conrich ASP as well as Delacour ASP. This property is located on the corner of Range Road 281 and Township Road 252 which allows great access. Currently Ag land with crop planted for this year. CN Rail line currently runs adjacent to the property which allows for a potential rail use as well. Rocky View should allow a first parcel scenario upon approval of course. (id:6289)



## Essential Information

Listing #	A2226246
Price	\$2,982,000
Bathrooms	0.00
Acres	142.63
Type	Vacant Land
Sub-Type	Freehold

## Community Information

Address	Range Road 281 & Township Road 252
Subdivision	N/A
City	Rural Rocky View County
Province	Alberta
Postal Code	T1T1T1

## Listing Details

Listing Office

RE/MAX Complete Realty



The trademarks MLS®, Multiple Listing Service® and the associated logos are owned by The Canadian Real Estate Association (CREA) and identify the quality of services provided by real estate professionals who are members of CREA. REALTOR®. Member of CREA and more.

Listing information last updated on October 14th, 2025 at 11:46pm PDT