

# \$1,299,999 - 631 28 Avenue Nw, Calgary

MLS® #A2222474

**\$1,299,999**

4 Bedroom, 4.00 Bathroom, 1,927 sqft

Single Family on 0.07 Acres

Mount Pleasant, Calgary, Alberta

Built on an incredible lot in Mount Pleasant, only steps to Confederation Park, this well appointed infill built by Boulevard Development Corporation will be ready for occupancy in Late September. The finished basement can be converted into a basement suite if so desired, but would be subject to approval and permitting by the city/municipality. This home is currently under construction, will exceed all expectations, and this is a great opportunity to get involved now to work with the builder and design team to customize your finishes! (id:6289)

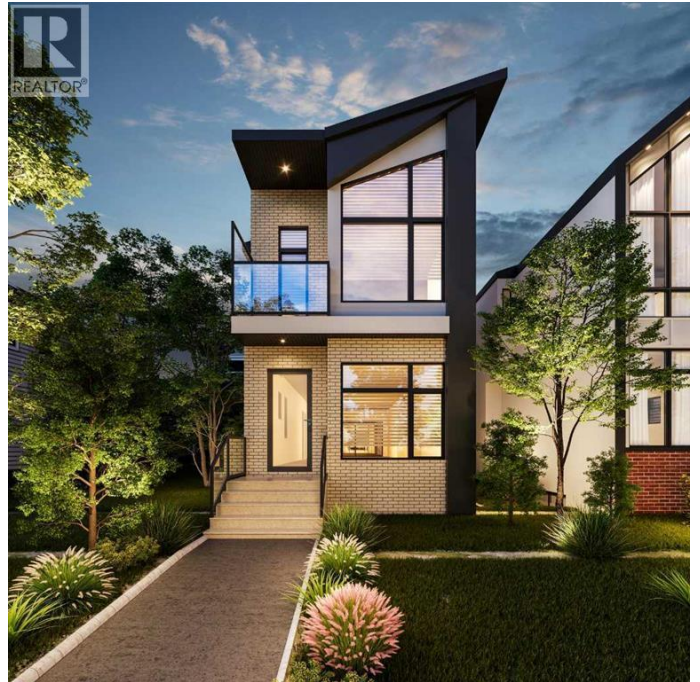
Built in 2025

## Essential Information

Listing #	A2222474
Price	\$1,299,999
Bedrooms	4
Bathrooms	4.00
Half Baths	1
Square Footage	1,927
Acres	0.07
Year Built	2025
Type	Single Family
Sub-Type	Freehold

## Community Information

Address	631 28 Avenue Nw
Subdivision	Mount Pleasant



City	Calgary
Province	Alberta
Postal Code	T2M2L2

### Amenities

Features	Treed, Back lane, Level
Parking Spaces	2
Parking	Detached Garage
# of Garages	2

### Interior

Appliances	Refrigerator, Cooktop - Gas, Oven, Microwave, Humidifier, Hood Fan, Washer & Dryer, Water Heater - Gas
Heating	Natural gas Other, Forced air, In Floor Heating
Cooling	See Remarks
Fireplace	Yes
# of Fireplaces	1
# of Stories	2
Has Basement	Yes

### Exterior

Exterior	Concrete, Stone, Stucco
Exterior Features	Landscaped, Lawn
Construction	Poured concrete, Wood frame
Foundation	Poured Concrete

### Listing Details

Listing Office	Royal LePage Solutions
----------------	------------------------



The trademarks MLS®, Multiple Listing Service® and the associated logos are owned by The Canadian Real Estate Association (CREA) and identify the quality of services provided by real estate professionals who are members of CREA. REALTOR®. Member of CREA and more.

Listing information last updated on October 13th, 2025 at 8:47pm PDT