

\$630,000 - Highway 9 Highway Ne, Rural Rocky View County

MLS® #A2221345

\$630,000

0 Bedroom, 0.00 Bathroom,
Vacant Land on 53.59 Acres

N/A, Rural Rocky View County, Alberta

Excellent potential for this 53.59 Acres. Located 16 miles east of Balzac. The lot faces onto Highway 9. An irrigation fed creek crosses the eastern end of the land. The property has resource income from a gas well lease and the land is leased each growing season to a regional farming operation. Will make a great location for a country home. Kathryn K9 school is located nearby. Easy access, with dust free paved roads on three sides. (id:6289)

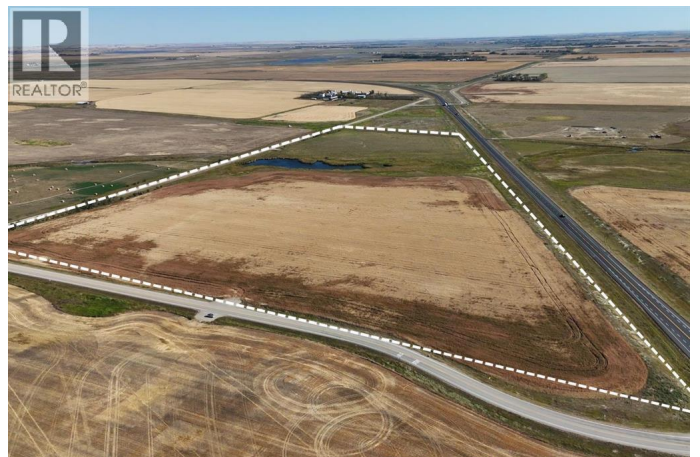
Essential Information

Listing #	A2221345
Price	\$630,000
Bathrooms	0.00
Acres	53.59
Type	Vacant Land
Sub-Type	Freehold

Community Information

Address	Highway 9 Highway Ne
Subdivision	N/A
City	Rural Rocky View County
Province	Alberta
Postal Code	T4A1J4

Listing Details



Listing Office

RE/MAX Real Estate (Mountain View)



The trademarks MLS®, Multiple Listing Service® and the associated logos are owned by The Canadian Real Estate Association (CREA) and identify the quality of services provided by real estate professionals who are members of CREA. REALTOR®. Member of CREA and more.

Listing information last updated on October 14th, 2025 at 12:46am PDT