

\$79,800 - #2, 660023 Range Road 224, Rural Athabasca County

MLS® #A2219089

\$79,800

0 Bedroom, 0.00 Bathroom,
Vacant Land on 2.15 Acres

N/A, Rural Athabasca County, Alberta

Build your dream home on this stunning 2.15-acre vacant lot in desirable Copper Ridge Estates! Located just 5 minutes from the town of Athabasca, this beautifully treed corner lot offers the perfect blend of privacy and convenience. Nestled in a peaceful setting, the mature trees provide natural beauty and seclusion. Backing onto an Environmental Reserve, you'll enjoy the added bonus of no neighbors building directly behind you—just tranquil surroundings and nature at your doorstep. (id:6289)

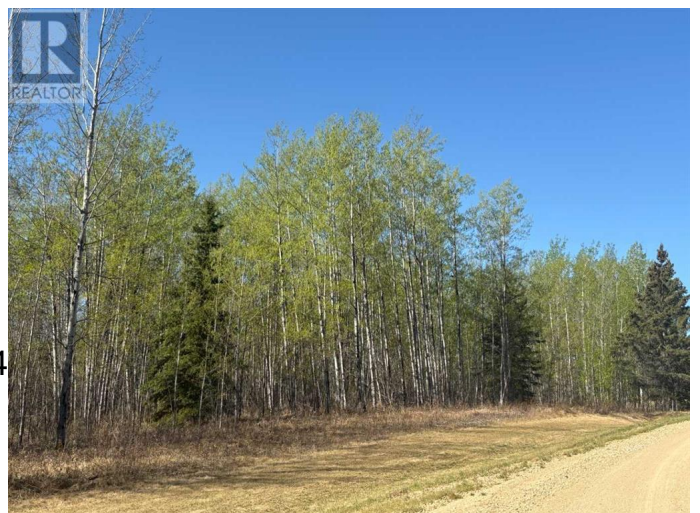
Essential Information

Listing #	A2219089
Price	\$79,800
Bathrooms	0.00
Acres	2.15
Type	Vacant Land
Sub-Type	Freehold

Community Information

Address	#2, 660023 Range Road 224
Subdivision	N/A
City	Rural Athabasca County
Province	Alberta
Postal Code	T9S2A8

Listing Details



Listing Office

ROYAL LEPAGE COUNTY REALTY



The trademarks MLS®, Multiple Listing Service® and the associated logos are owned by The Canadian Real Estate Association (CREA) and identify the quality of services provided by real estate professionals who are members of CREA. REALTOR®. Member of CREA and more.

Listing information last updated on October 21st, 2025 at 6:01am PDT