

# \$259,000 - 11, 714040 71 Range Road, Rural Grande Prairie No. 1, County Of

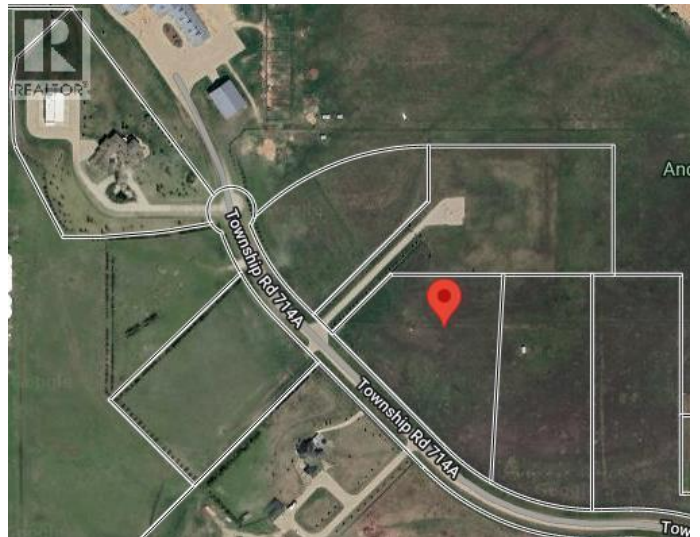
MLS® #A2216399

**\$259,000**

0 Bedroom, 0.00 Bathroom,  
Vacant Land on 5.41 Acres

N/A, Rural Grande Prairie No. 1, County Of,  
Alberta

**VACANT LOT AND IMMEDIATE POSSESSION!!!** This 5.41 acre lot is ready to build on and zoned CR 5 country residential. Enjoy the convenience of being just minutes from Grande Prairie, where youâ€™ll find a variety of amenities to suit your lifestyle. With flexible options for build-to-suit and carrying options available, your vision can become a reality. Donâ€™t miss out on this incredible opportunity to invest in a community. (id:6289)



## Essential Information

Listing #	A2216399
Price	\$259,000
Bathrooms	0.00
Acres	5.41
Type	Vacant Land
Sub-Type	Freehold

## Community Information

Address	11, 714040 71 Range Road
Subdivision	N/A
City	Rural Grande Prairie No. 1, County Of
Province	Alberta
Postal Code	T8W5J5

## Listing Details

Listing Office

RE/MAX Grande Prairie



The trademarks MLS®, Multiple Listing Service® and the associated logos are owned by The Canadian Real Estate Association (CREA) and identify the quality of services provided by real estate professionals who are members of CREA. REALTOR®. Member of CREA and more.

Listing information last updated on October 22nd, 2025 at 9:31pm PDT