

# \$2,450,000 - 39.69 Acres Lochend Road, Rural Rocky View County

MLS® #A2200230

**\$2,450,000**

0 Bedroom, 0.00 Bathroom,  
Vacant Land on 39.69 Acres

N/A, Rural Rocky View County, Alberta

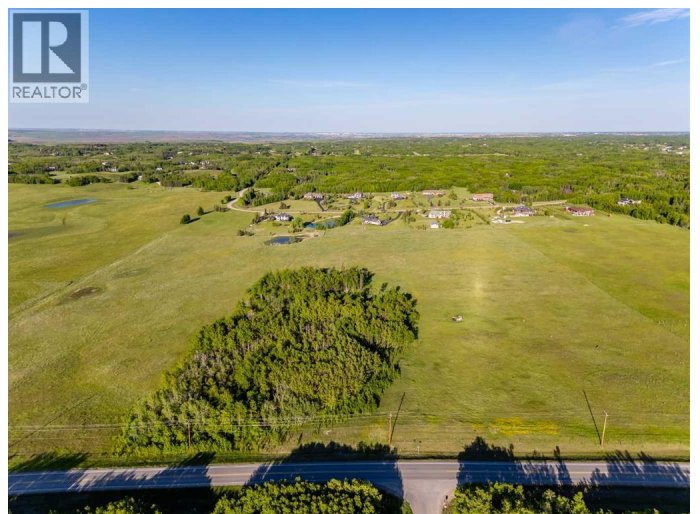
**BEARSPAW LAND OPPORTUNITY ||** Located just minutes West of Calgary on paved roads is this incredible 39.69 acre parcel with Ag General zoning. With a blend of native prairie pasture, a bluff of trees for privacy and a gentle sloping hillside, this property is well suited for a natural walkout. The land use allows for 2 dwellings, an accessory building up to 10,010 square feet and 20 animal units. It is an ideal property for those wanting the benefits and space of rural living with the location and convenience that comes with being close to Calgary and Cochrane. A drilled well is nicely situated on the land for your future development or grazing needs. GST is applicable. (id:6289)

## Essential Information

Listing #	A2200230
Price	\$2,450,000
Bathrooms	0.00
Acres	39.69
Type	Vacant Land
Sub-Type	Freehold

## Community Information

Address	39.69 Acres Lochend Road
Subdivision	N/A
City	Rural Rocky View County



Province                      Alberta  
Postal Code                T4C2H3

## Listing Details

Listing Office              CIR Realty



The trademarks MLS®, Multiple Listing Service® and the associated logos are owned by The Canadian Real Estate Association (CREA) and identify the quality of services provided by real estate professionals who are members of CREA. REALTOR®. Member of CREA and more.

Listing information last updated on October 14th, 2025 at 11:31pm PDT