

\$625,000 - 200, 14 Crystalridge Drive, Okotoks

MLS® #A2196830

\$625,000

0 Bedroom, 0.00 Bathroom, 1,639 sqft

Office on 0.00 Acres

Crystalridge, Okotoks, Alberta

Fantastic opportunity to own half of the 2nd floor of this great commercial unit. This unit has lots of potential for a multitude of uses, at one time it was split into 2 tenants and could easily be split again if you wanted to have a smaller space for your business and rent out the other side. This unit is currently being used as a spa and salon, please note the fixtures belong to the tenant and will be removed. This is a great location with lots of natural light, your own heating and cooling controls. There is a reception with a kitchen area and a washroom with tiled flooring (there is potential for a 2nd washroom but it is currently being used as the laundry). There is a huge room with large windows (this is currently used for the hairdressing stations), there are 3 private rooms and another area that would make a great shared space. The unit has modern paint colours and gorgeous flooring. There is additional storage space and an entrance to the back staircase. The building is well maintained and there is lots of parking for your customers. This is a great unit in a fabulous location! View 3D Tour. (id:6289)

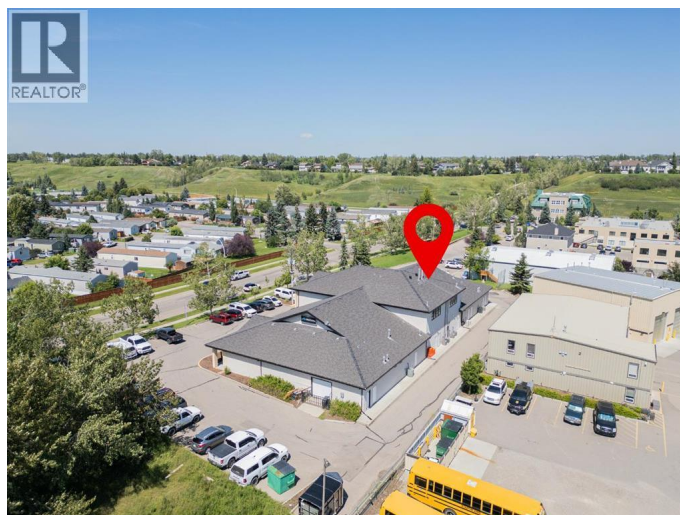
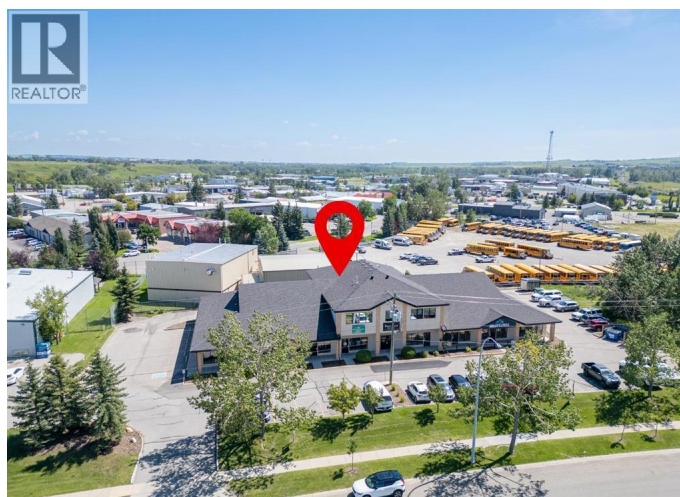
Built in 2007

Essential Information

Listing # A2196830

Price \$625,000

Bathrooms 0.00



Square Footage	1,639
Acres	0.00
Year Built	2007
Type	Office
Sub-Type	Condominium/Strata

Community Information

Address	200, 14 Crystalridge Drive
Subdivision	Crystalridge
City	Okotoks
Province	Alberta
Postal Code	T1S2C3

Interior

Heating	Natural gas Forced air
Cooling	Central air conditioning

Listing Details

Listing Office	RE/MAX First
----------------	--------------



The trademarks MLS®, Multiple Listing Service® and the associated logos are owned by The Canadian Real Estate Association (CREA) and identify the quality of services provided by real estate professionals who are members of CREA. REALTOR®. Member of CREA and more.

Listing information last updated on October 13th, 2025 at 9:31pm PDT