

\$5,500,000 - 34024 Township Road 260, Rural Rocky View County

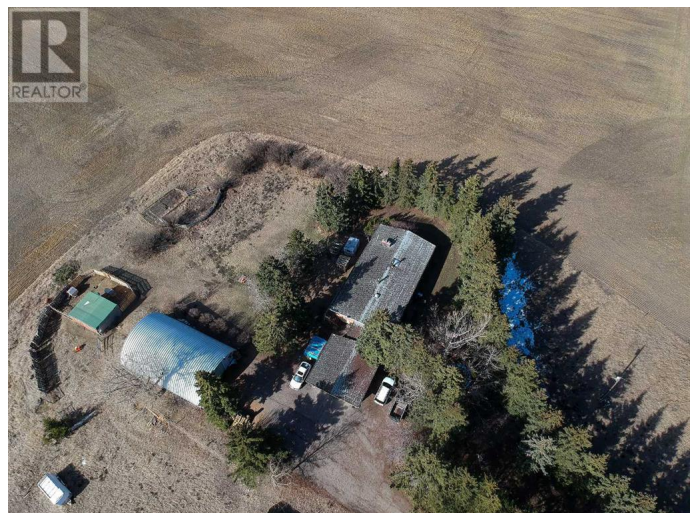
MLS® #A2180825

\$5,500,000

0 Bedroom, 0.00 Bathroom,
Agriculture on 134.52 Acres

N/A, Rural Rocky View County, Alberta

Bordered by the Glenbow Ranch Provincial Park this 134 acre parcel offers spectacular view of the mountains and down into the Bow Valley. Easily accessed off Highway 1A this parcel sits part way between Cochrane and Calgary. The land is comprised of flat cultivated land, rolling pasture and dramatic coulees. As part of the Glenbow Ranch Area Structure Plan there is future development potential. The sizeable house, a bi-level, is dated but liveable and is supported by a Quonset shop/storage shed, a double detached garage and animal shelters. The property currently has a tenant in place. Separate from the house tenant there is grazing and crop rental paid annually. This is wonderful land for a country equestrian estate in a very accessible location with ample land for growing, grazing or riding. (id:6289)



Essential Information

Listing #	A2180825
Price	\$5,500,000
Bathrooms	0.00
Acres	134.52
Type	Agriculture
Sub-Type	Freehold

Community Information

Address	34024 Township Road 260
Subdivision	N/A
City	Rural Rocky View County
Province	Alberta
Postal Code	T4C1A2

Amenities

Features	See remarks
----------	-------------

Listing Details

Listing Office	Sotheby's International Realty Canada
----------------	---------------------------------------



The trademarks MLS®, Multiple Listing Service® and the associated logos are owned by The Canadian Real Estate Association (CREA) and identify the quality of services provided by real estate professionals who are members of CREA. REALTOR®. Member of CREA and more.

Listing information last updated on October 14th, 2025 at 3:16pm PDT