

# \$4,900,000 - Township Road 262 Range Road 283, Rural Rocky View County

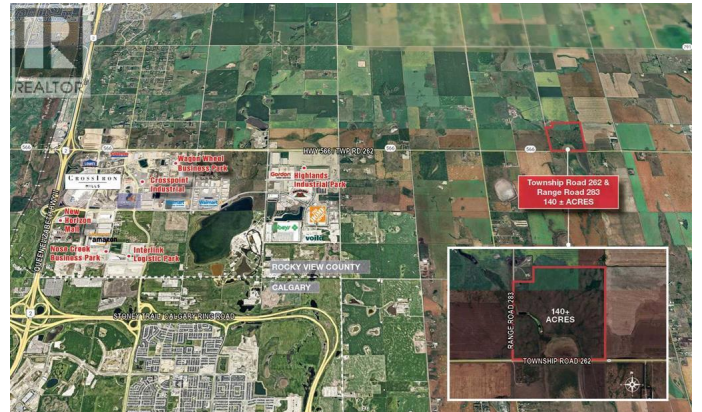
MLS® #A2170858

**\$4,900,000**

0 Bedroom, 0.00 Bathroom,  
Vacant Land on 139.50 Acres

N/A, Rural Rocky View County, Alberta

The subject site is located east of Balzac, Rocky View County, AB, in an area that has seen significant growth and development in recent years. About a 20 minute drive from Airdrie, AB and 18 minutes from Calgary, AB. Close proximity to some major commercial developments, including CrossIron Mills shopping centre, various industrial and logistics parks and retail developments, offering future potential for various types of developments if the parcel is rezoned. Quick and easy access to CrossIron Drive, Dwight McClellan/Metis Trail, Stoney Trail (Calgary ring road) and QE 2, as well as the Calgary International Airport. (id:6289)



## Essential Information

Listing #	A2170858
Price	\$4,900,000
Bathrooms	0.00
Acres	139.50
Type	Vacant Land
Sub-Type	Freehold

## Community Information

Address	Township Road 262 Range Road 283
Subdivision	N/A
City	Rural Rocky View County
Province	Alberta

Postal Code T0M0T0

## Listing Details

Listing Office MaxWell Canyon Creek



The trademarks MLS®, Multiple Listing Service® and the associated logos are owned by The Canadian Real Estate Association (CREA) and identify the quality of services provided by real estate professionals who are members of CREA. REALTOR®. Member of CREA and more.

Listing information last updated on October 14th, 2025 at 3:16pm PDT