

\$1,026,975 - Se-15-71-5-w6, Rural Grande Prairie No. 1, County Of

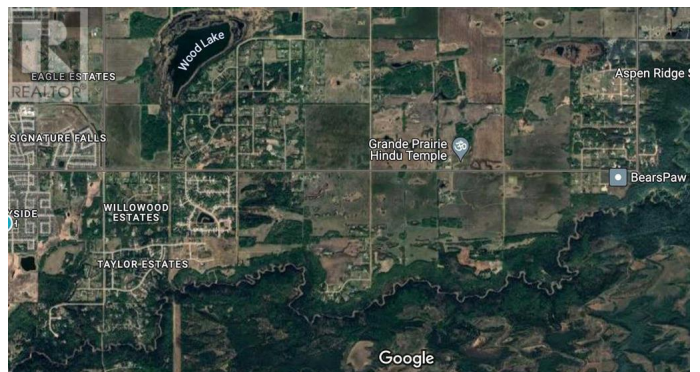
MLS® #A2123359

\$1,026,975

0 Bedroom, 0.00 Bathroom,
Vacant Land on 136.93 Acres

N/A, Rural Grande Prairie No. 1, County Of,
Alberta

Development Parcel!! 136.93 acres of land just SE of Grande Prairie. This land is currently being farmed but would be a great future phase of Heritage Estates -which is a new acreage community with the first phases planned on the adjacent quarter to the West of this parcel (MLS# A2123374). Located East on 68 Avenue (Twp Rd 712) just past Sandy Ridge Estates and Maple Ridge Estates to Range Rd 52, along the North side of 68 Ave/Twp 712 and West side of RR 52. (id:6289)



Essential Information

Listing #	A2123359
Price	\$1,026,975
Bathrooms	0.00
Acres	136.93
Type	Vacant Land
Sub-Type	Freehold

Community Information

Address	Se-15-71-5-w6
Subdivision	N/A
City	Rural Grande Prairie No. 1, County Of
Province	Alberta
Postal Code	T8X4A2

Listing Details

Listing Office RE/MAX Grande Prairie



The trademarks MLS®, Multiple Listing Service® and the associated logos are owned by The Canadian Real Estate Association (CREA) and identify the quality of services provided by real estate professionals who are members of CREA. REALTOR®. Member of CREA and more.

Listing information last updated on October 14th, 2025 at 10:01pm PDT