

\$775,000 - 217, 14579 Twp Rd 690, Rural Lac La Biche County

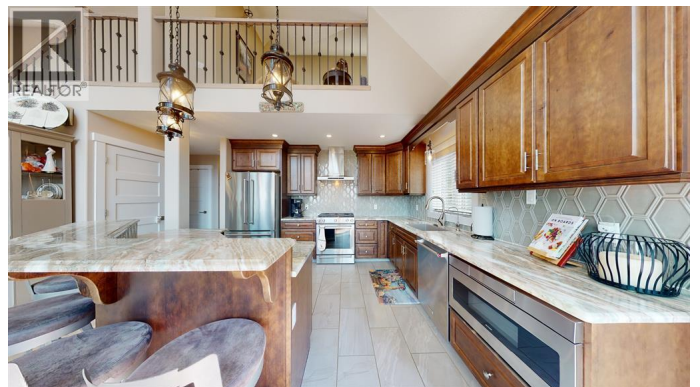
MLS® #A2116517

\$775,000

4 Bedroom, 3.00 Bathroom, 1,735 sqft
Single Family on 0.50 Acres

N/A, Rural Lac La Biche County, Alberta

Executive lakefront living at Blais Resort! This 4-bedroom, 4-bathroom home spans three fully finished levels and has been thoughtfully designed with luxury, comfort, and functionality in mind. From the outside, the home makes the most of its south-facing exposure with floor-to-ceiling windows and a 26 ft deck overlooking the lake. The property includes a 28x32 heated double garage—complete with its own 3-piece bathroom and laundry pair—plus a fully insulated 16x24 cold storage shed and a 12x14 heated and insulated bunkie for extra guest space. Inside, the main floor offers two generous bedrooms, while the upper level features the primary suite with walk-in closet, ensuite, and a dedicated office. The walkout basement is beautifully finished with a wet bar, exercise area, TV space, full bathroom, mechanical room, and another bedroom, leading out to a screened and covered patio with serene lake views. Built with no expense spared, this home features continuous metal roofing, Hardy board siding, triple-pane windows, an ICF block basement with infloor heating, tankless hot water, an efficient heat exchange system, central A/C, and spray foam insulation in all walls and ceilings. Finishes include hardwood flooring, granite countertops, custom tilework in the kitchen and bathrooms, high-end appliances, a stone-mantel gas fireplace, an electric fireplace in the primary bedroom, and timeless



dÃ©cor throughout. Every window frames an unobstructed view of the lake. Lovingly designed and built by the original owners, this remarkable home is ready to welcome a new family to enjoy the lakefront lifestyle they envisioned. (id:6289)

Built in 2017

Essential Information

Listing #	A2116517
Price	\$775,000
Bedrooms	4
Bathrooms	3.00
Square Footage	1,735
Acres	0.50
Year Built	2017
Type	Single Family
Sub-Type	Freehold
Style	A-Frame

Community Information

Address	217, 14579 Twp Rd 690
Subdivision	N/A
City	Rural Lac La Biche County
Province	Alberta
Postal Code	T0A2C0

Amenities

Amenities	Playground, Water Nearby
Utilities	Electricity
Features	See remarks, Wet bar, PVC window, Closet Organizers, No Smoking Home
Parking Spaces	10
Parking	Detached Garage, Gravel
# of Garages	2
Is Waterfront	Yes
Waterfront	Waterfront on lake

Interior

Appliances	Refrigerator, Range - Gas, Dishwasher, Microwave, Compactor, Freezer, Hood Fan, Washer/Dryer Stack-Up, Water Heater - Tankless
Heating	Natural gas Other, In Floor Heating
Cooling	Central air conditioning
Fireplace	Yes
# of Fireplaces	2
# of Stories	2
Has Basement	Yes

Exterior

Construction	Wood frame, ICF Block
Foundation	See Remarks

Listing Details

Listing Office People 1st Realty



The trademarks MLS®, Multiple Listing Service® and the associated logos are owned by The Canadian Real Estate Association (CREA) and identify the quality of services provided by real estate professionals who are members of CREA. REALTOR®. Member of CREA and more.

Listing information last updated on October 14th, 2025 at 1:41pm PDT