

\$1,500,000 - 13 61027 Highway 672, Rural Grande Prairie No. 1, County Of

MLS® #A2098290

\$1,500,000

0 Bedroom, 0.00 Bathroom,
Vacant Land on 10.88 Acres

Emerson Trail Industrial Park, Rural Grande
Prairie No. 1, County Of, Alberta

Huge Visibility for this vacant parcel of land
zoned RM-2 (Rural Medium Industrial) in an
excellent location right on the corner of
Emerson Trail and Highway 2. The size is
10.88 acres and has great frontage. Services
available to the edge of the property. One of
the last parcels of land of this size available
with such good exposure and access.
(id:6289)

Essential Information

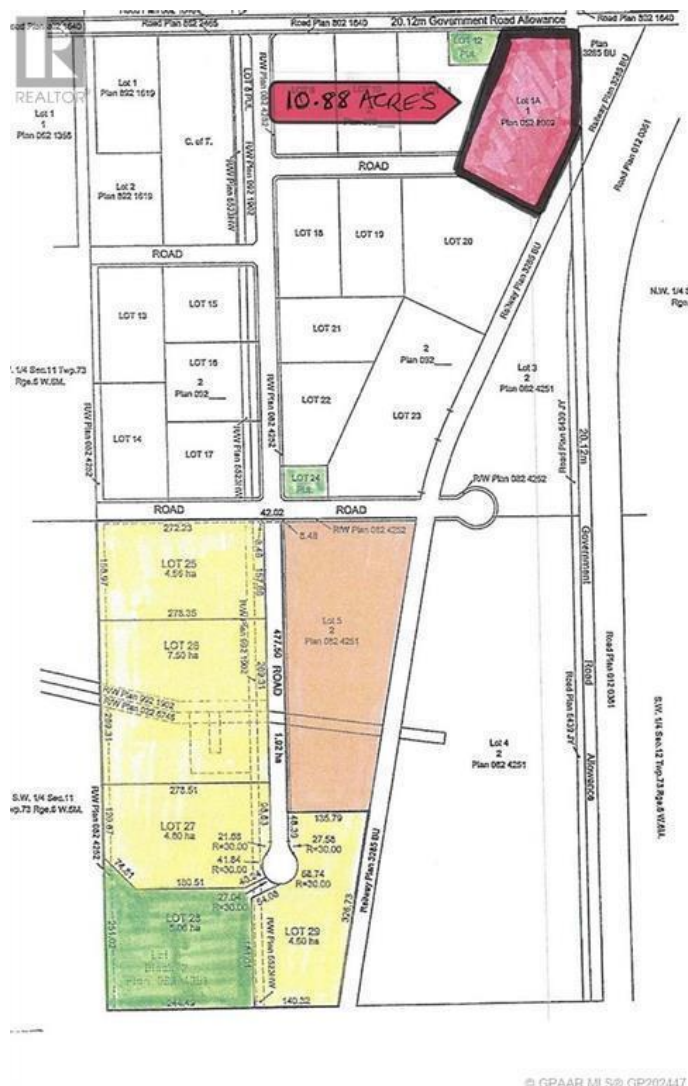
Listings #	A2098290
Price	\$1,500,000
Bathrooms	0.00
Acres	10.88
Type	Vacant Land
Sub-Type	Freehold

Community Information

Address	13 61027 Highway 672
Subdivision	Emerson Trail Industrial Park
City	Rural Grande Prairie No. 1, County Of
Province	Alberta
Postal Code	T0H3C0

Listing Details

Listings Office	Century 21 Grande Prairie Realty Inc.
-----------------	---------------------------------------



© GPAAR MLS® GP202447



The trademarks MLS®, Multiple Listing Service® and the associated logos are owned by The Canadian Real Estate Association (CREA) and identify the quality of services provided by real estate professionals who are members of CREA. REALTOR®. Member of CREA and more.

Listing information last updated on October 12th, 2025 at 11:16pm PDT