

\$1,850,000 - 54027 Highway 670, Grande Prairie

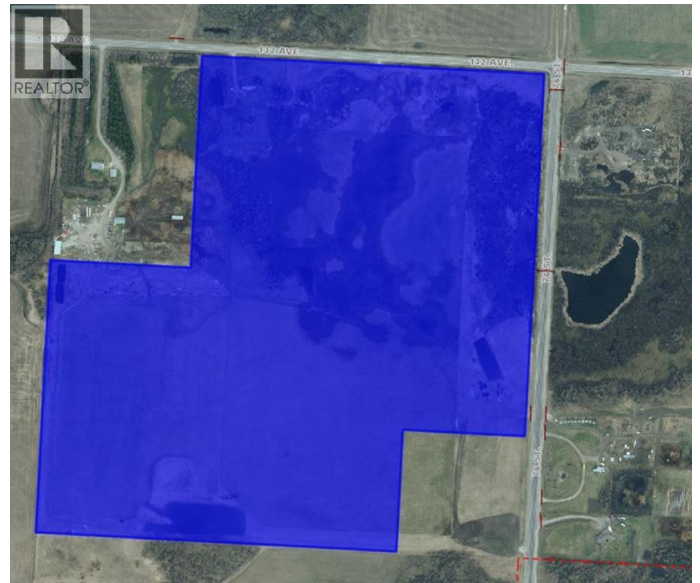
MLS® #A2021004

\$1,850,000

0 Bedroom, 0.00 Bathroom,
Vacant Land on 127.01 Acres

N/A, Grande Prairie, Alberta

Amazing quarter section of land with great development potential. Located on the corner of 132 St and Range Road 54 within the city limits of Grande Prairie. It's situated just one quarter North of Carriage Lane Estates. This piece has been in the family for generations and is strategically positioned for future development in the area. This is a must see. (id:6289)



Essential Information

Listing #	A2021004
Price	\$1,850,000
Bathrooms	0.00
Acres	127.01
Type	Vacant Land
Sub-Type	Freehold

Community Information

Address	54027 Highway 670
Subdivision	N/A
City	Grande Prairie
Province	Alberta
Postal Code	T8X0G4

Listing Details

Listing Office	RE/MAX Grande Prairie
----------------	-----------------------



The trademarks MLS®, Multiple Listing Service® and the associated logos are owned by The Canadian Real Estate Association (CREA) and identify the quality of services provided by real estate professionals who are members of CREA. REALTOR®. Member of CREA and more.

Listing information last updated on October 12th, 2025 at 2:02pm PDT