

\$3,969,000 - # 2 & # 72 Highways, Rural Rocky View County

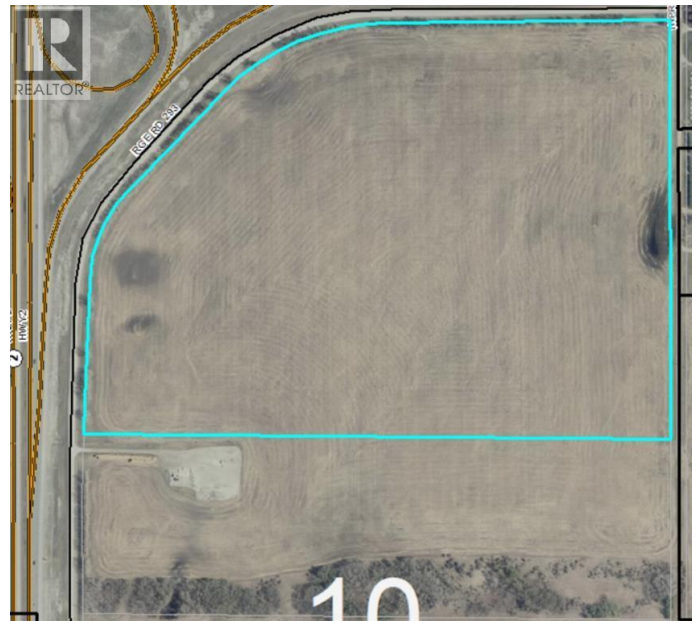
MLS® #A1057700

\$3,969,000

0 Bedroom, 0.00 Bathroom,
Vacant Land on 87.53 Acres

N/A, Rural Rocky View County, Alberta

A great parcel of land situated on the SE corner of highways # 2 & # 72 approximately 6 miles north of Airdrie . Zoned as agricultural land at this time , there is potential for possible zoning changes down the road. This property is lined with mature trees on two sides and has road access on three sides . Two of these roads are paved . This land has a very gentle slope facing the highway giving it great exposure for motorists and also revealing a decent view of the mountains from all points of the land . The ideas are endless for this land . There is also a 42 acre parcel immediately to the south also for sale. MLS # A1235902 (id:6289)



Essential Information

Listing #	A1057700
Price	\$3,969,000
Bathrooms	0.00
Acres	87.53
Type	Vacant Land
Sub-Type	Freehold

Community Information

Address	# 2 & # 72 Highways
Subdivision	N/A
City	Rural Rocky View County
Province	Alberta

Postal Code T0M0S0

Listing Details

Listing Office MaxWell Capital Realty



The trademarks MLS®, Multiple Listing Service® and the associated logos are owned by The Canadian Real Estate Association (CREA) and identify the quality of services provided by real estate professionals who are members of CREA. REALTOR®. Member of CREA and more.

Listing information last updated on October 14th, 2025 at 7:31am PDT