

\$42,750 - 15 Bear Creek Drive, High Level

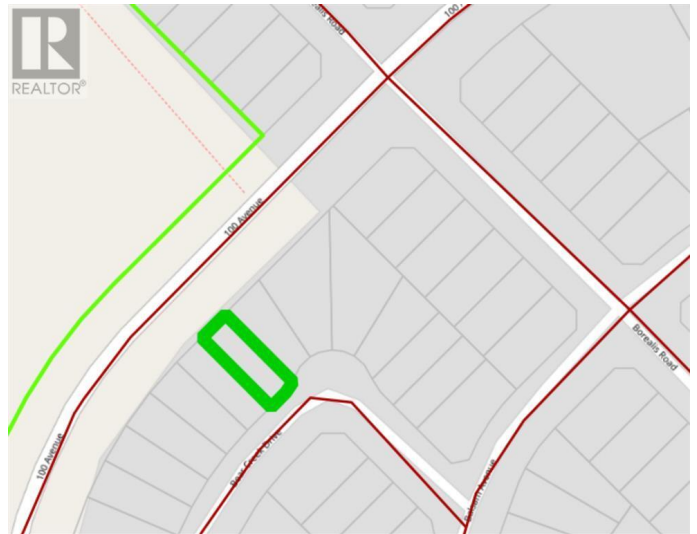
MLS® #A1043540

\$42,750

0 Bedroom, 0.00 Bathroom,
Vacant Land on 0.11 Acres

N/A, High Level, Alberta

There are so many reasons why this may be the perfect location for your new home. LOCATION, LOCATION, LOCATION!!! Close to the hospital, shopping, the Toy Lending Library and then there's the price? This neighborhood is zoned R-2 which means manufactured and modular homes, an economical alternative to stick built homes, are permitted uses. DEVELOPERS?? An awesome location to build revenue properties. (id:6289)



9.2 R-2 (MEDIUM DENSITY RESIDENTIAL) LAND USE DISTRICT

INTENT
9.2.1 The intent of the R-2 LAND USE DISTRICT is to encourage a diversity of housing options without undermining the quality of neighbourhoods.

USES

TABLE 9.3 PERMITTED AND DISCRETIONARY USES IN THE R-2 LAND USE DISTRICT

PERMITTED USES	DISCRETIONARY USES
a) ACCESSORY BUILDING OR STRUCTURE	a) ASSISTED LIVING FACILITY of up to 6 units
b) DWELLING - SINGLE FAMILY	b) BUILDING - MOVED IN
c) DWELLING - DUPLEX	c) DWELLING - MULTIPLE UNIT of up to 6 units
d) DWELLING - TOWNHOUSE of up to 6 units; and	d) ACCESSORY USES associated with a DWELLING - SINGLE FAMILY
e) MANUFACTURED HOME - MODULAR	i) BED AND BREAKFAST BUSINESS
	ii) BOARDING HOUSE
	iii) FAMILY DAY HOME
	iv) HOME OCCUPATION
	v) SECONDARY SUITE; and
	e) MANUFACTURED HOME - MOBILE

TABLE 9.4 R-2 LAND USE DISTRICT LOT, SITE AND BUILDING REQUIREMENTS

COMPONENT	DWELLING - SINGLE-FAMILY, BUILDING - MOVED IN and MANUFACTURED HOME - MODULAR / Unit	DWELLING - DUPLEX and DWELLING - TOWNHOUSE / Unit	DWELLING - MULTIPLE-UNIT and ASSISTED LIVING FACILITIES / Development
LOT AREA (minimum)	330m ² /3,552sq.ft.	233m ² /2,507sq.ft.	834m ² /8,977sq.ft.
LOT WIDTH (minimum)	11m/36ft.	8m/26.2ft.	20m/65.6ft.
LOT DEPTH (minimum)	30m/98.4ft.	30m/98.4ft.	35m/114.8ft.
LOT - FRONT (minimum)	6m/19.6ft.	6m/19.6ft.	6m/19.6ft.
YARD - FLANKAGE (minimum)	3m/9.85ft.	3m/9.85ft.	3m/9.85ft.
YARD - SIDE (minimum)	1.2m/3.9ft.	1.2m on one side and 0m on the side with a PARTY WALL	3m/9.85ft.
YARD - REAR (minimum)	7m/22.9ft.	7m/22.9ft.	7m/22.9ft.
FLOOR AREA - GROSS above FINISHED GRADE (minimum)	90m ² /968sq.ft.	75m ² /807sq.ft.	110m ² /1,184sq.ft.
BUILDING HEIGHT (maximum)	10m/32.8ft.	10m/32.8ft.	10m/32.8ft.
LOT COVERAGE (maximum)	40%	40%	40%

Note: These requirements are based upon each DWELLING UNIT being contained on its own individual LOT.

English (Canada) Accessibility Inquiries

Essential Information

Listing #	A1043540
Price	\$42,750
Bathrooms	0.00
Acres	0.11
Type	Vacant Land
Sub-Type	Freehold

Community Information

Address	15 Bear Creek Drive
Subdivision	N/A
City	High Level
Province	Alberta
Postal Code	T0H1Z0

Amenities

Amenities	Airport, Golf Course, Park, Playground, Recreation Nearby, Schools, Shopping, Water Nearby
-----------	--

Listing Details

Listing Office Century 21 Prime Realty (2002) Ltd.



The trademarks MLS®, Multiple Listing Service® and the associated logos are owned by The Canadian Real Estate Association (CREA) and identify the quality of services provided by real estate professionals who are members of CREA. REALTOR®. Member of CREA and more.

Listing information last updated on October 13th, 2025 at 7:01pm PDT