

\$369,900 - Lot 25 1883 Crown Isle Blvd, Courtenay

MLS® #945503

\$369,900

0 Bedroom, 0.00 Bathroom,
Vacant Land on 0.12 Acres

Crown Isle, Courtenay, British Columbia

WELCOME to the RISE, Phase V on the north side of the Crown Isle Community. Come design your next home with Chris McGrath and his Team at Crown Isle Homes or with one of our other Custom Home Builder partners. The Lot is ready for immediate construction. Good views of Beaver Meadow Farms below. Close to daily amenities and recreational outlets along with schools and the North Island Hospital Comox Valley. For More information contact your local realtor or the Real Estate Office at Crown Isle at (250) 703-5054 or email realestate@crownisle.ca (id:6289)

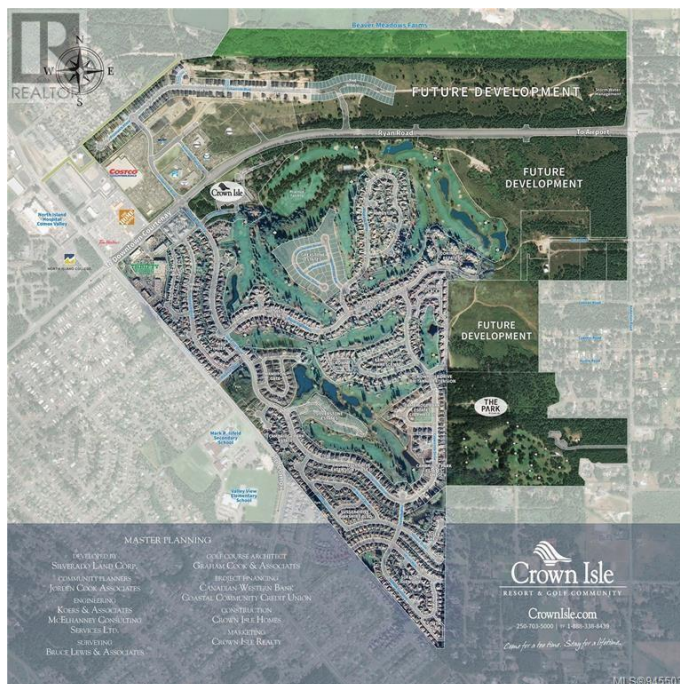
Essential Information

Listing #	945503
Price	\$369,900
Bathrooms	0.00
Acres	0.12
Type	Vacant Land
Sub-Type	Freehold

Community Information

Address	Lot 25 1883 Crown Isle Blvd
Subdivision	Crown Isle
City	Courtenay
Province	British Columbia
Postal Code	V9N0E1

Amenities



Features	Central location, Curb & gutter, Hillside, Partially cleared, Other
View	Mountain view, Valley view

Additional Information

Zoning	Residential
--------	-------------

Listing Details

Listing Office	Royal LePage-Comox Valley (CV)
----------------	--------------------------------



The trademarks MLS®, Multiple Listing Service® and the associated logos are owned by The Canadian Real Estate Association (CREA) and identify the quality of services provided by real estate professionals who are members of CREA. REALTOR®. Member of CREA and more.

Listing information last updated on October 14th, 2025 at 11:46pm PDT