

\$1,195,000 - 3290 New Street Unit# 418, Burlington

MLS® #40778358

\$1,195,000

2 Bedroom, 2.00 Bathroom, 1,713 sqft

Single Family on 0.00 Acres

330 - Roseland, Burlington, Ontario

2 bed 2 bath open concept, 1700 sq ft unit located in Marantha Gardens, a 55+ life lease community near downtown Burlington with wheelchair access and great amenities including workshop, lounge, fitness and party rooms, terrace, underground parking and lockers. Open concept with engineered hardwood throughout, white kitchen with s/s appliances, dedicated laundry room, den, and private balcony overlooking park area. Primary ensuite with roll in shower+grab bars -wheelchair friendly. (id:6289)

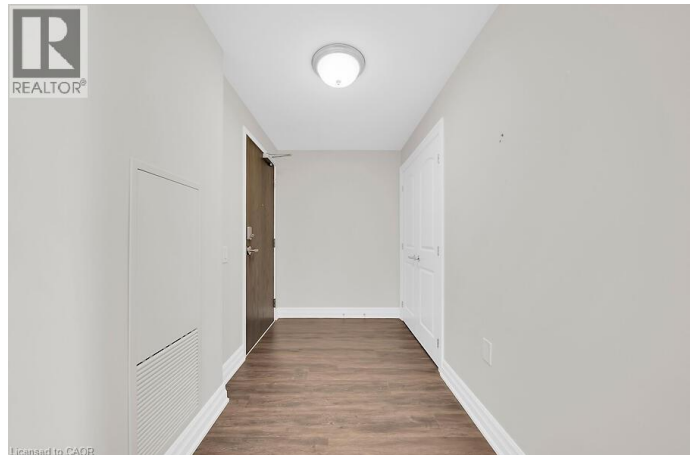
Built in 2020

Essential Information

Listing #	40778358
Price	\$1,195,000
Bedrooms	2
Bathrooms	2.00
Square Footage	1,713
Acres	0.00
Year Built	2020
Type	Single Family
Sub-Type	Life Lease

Community Information

Address	3290 New Street Unit# 418
Subdivision	330 - Roseland
City	Burlington
Province	Ontario



Postal Code L7N1M8

Amenities

Amenities Shopping, Exercise Centre, Guest Suite, Party Room
Features Balcony, Automatic Garage Door Opener
Parking Spaces 1
Parking None, Underground

Interior

Appliances Dishwasher, Dryer, Refrigerator, Stove, Washer, Microwave Built-in, Window Coverings, Garage door opener
Heating Natural gas Forced air
Cooling Central air conditioning
of Stories 1

Exterior

Exterior Brick, Stone
Foundation Poured Concrete

Listing Details

Listing Office RE/MAX Escarpment Realty Inc.



The trademarks MLS®, Multiple Listing Service® and the associated logos are owned by The Canadian Real Estate Association (CREA) and identify the quality of services provided by real estate professionals who are members of CREA. REALTOR®. Member of CREA and more.

Listing information last updated on October 12th, 2025 at 8:01am PDT