

\$299,900 - 186 John Street N, Hamilton

MLS® #40778321

\$299,900

0 Bedroom, 0.00 Bathroom,
Vacant Land on 0.00 Acres

140 - Beasley, Hamilton, Ontario

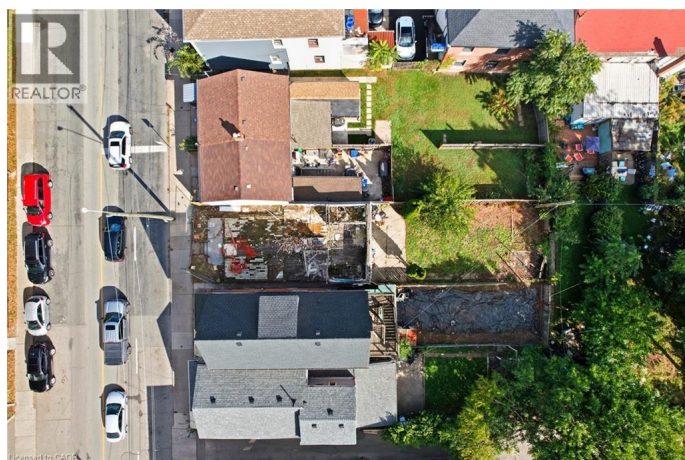
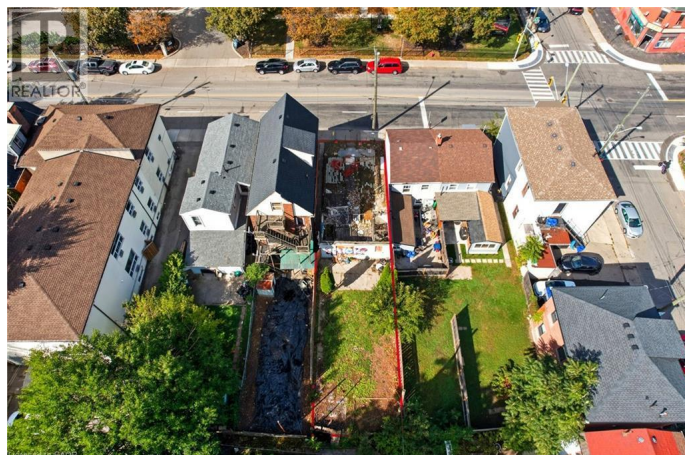
Prime Downtown Hamilton Opportunity!
Location truly matters, and this one delivers.
Build your dream home on this rarely offered vacant lot in the heart of downtown Hamilton, just steps from the waterfront and Pier 4 Park. Enjoy being within walking distance to charming shops, vibrant restaurants, recreation centres, schools, and all the urban conveniences that make this neighbourhood so desirable. All utility hookups are available, including water, gas, hydro, and sewer â€” making your build that much easier. Whether youâ€™re envisioning a custom residence or exploring development potential, this property offers endless possibilities. Buyer to complete their own detailed inquiry regarding zoning and development options. Donâ€™t miss your chance to invest in one of Hamiltonâ€™s most exciting and fast-evolving communities.
(id:6289)

Essential Information

| | |
|-----------|-------------|
| Listing # | 40778321 |
| Price | \$299,900 |
| Bathrooms | 0.00 |
| Acres | 0.00 |
| Type | Vacant Land |
| Sub-Type | Freehold |

Community Information

| | |
|---------|-------------------|
| Address | 186 John Street N |
|---------|-------------------|



| | |
|-------------|---------------|
| Subdivision | 140 - Beasley |
| City | Hamilton |
| Province | Ontario |
| Postal Code | L8L4P2 |

Amenities

| | |
|-----------|--|
| Amenities | Beach, Hospital, Public Transit, Schools |
| Utilities | Natural Gas |

Listing Details

| | |
|----------------|-------------------------------------|
| Listing Office | RE/MAX Escarpment Golfi Realty Inc. |
|----------------|-------------------------------------|



The trademarks MLS®, Multiple Listing Service® and the associated logos are owned by The Canadian Real Estate Association (CREA) and identify the quality of services provided by real estate professionals who are members of CREA. REALTOR®. Member of CREA and more.

Listing information last updated on October 14th, 2025 at 2:16am PDT