

# \$750,000 - 690 Coldstream Drive, Waterloo

MLS® #40777873

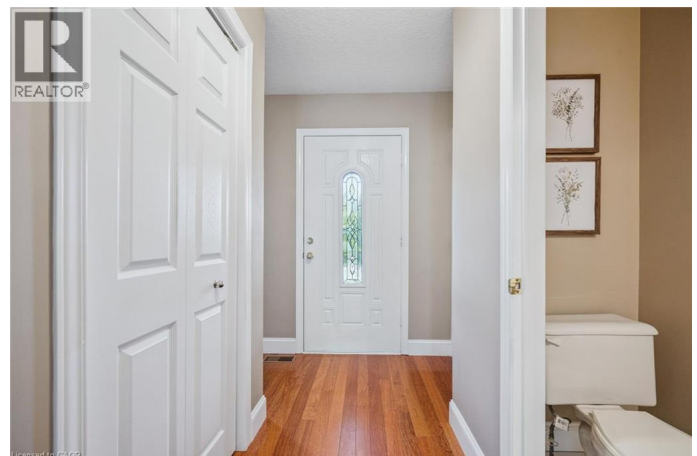
**\$750,000**

3 Bedroom, 3.00 Bathroom, 2,141 sqft

Single Family on 0.00 Acres

441 - Erbsville/Laurelwood, Waterloo, Ontario

WOW! Premium oversized corner lot. Welcome to 690 Coldstream Drive. Nestled on a quiet picturesque street, this gorgeous family home offers exceptional space inside and out. You'll love the family friendly neighbourhood with close proximity to many amenities such as the Laurel Creek conservation, the famous St. Jacobs Farmer's Market, scenic walking trails, schools, parks, YMCA, library and so much more. Step inside the open-concept main floor, featuring beautiful hardwood flooring, a STUNNING two-sided fireplace, a 2-piece powder room, and a bright kitchen with centre island, coffee nook and stainless steel appliances. Enjoy two walkouts leading to your fully fenced backyard paradise featuring a large and private L-shaped deck, perfect for entertaining and outdoor living. Upstairs, you'll find three bright and generous sized bedrooms, including a primary suite with a vaulted ceiling, a stunning feature window, and a private ensuite. The partially finished basement provides additional living space, ideal for a family recreation room, home gym, kids play room, storage area the possibilities are endless. Some recent upgrades to note include, master bedroom window (2018), Fridge (2024) Stove (2025) Furnace (2019), and owned water heater. This stunning family home really checks all the boxes from the pool-sized backyard, the inviting front porch, its corner lot and the family friendly neighbourhood. This home is turnkey and a



MUST SEE! Here today, gone tomorrow.  
Don't miss out! (id:6289)

### Essential Information

Listing #	40777873
Price	\$750,000
Bedrooms	3
Bathrooms	3.00
Half Baths	1
Square Footage	2,141
Acres	0.00
Type	Single Family
Sub-Type	Freehold
Style	2 Level

### Community Information

Address	690 Coldstream Drive
Subdivision	441 - Erbsville/Laurelwood
City	Waterloo
Province	Ontario
Postal Code	N2V2J1

### Amenities

Amenities	Park, Place of Worship, Playground, Schools, Shopping, Ski area
Features	Corner Site, Conservation/green belt, Sump Pump, Automatic Garage Door Opener
Parking Spaces	4
Parking	Attached Garage
# of Garages	1

### Interior

Interior Features	Ceiling fans
Appliances	Central Vacuum, Dishwasher, Dryer, Microwave, Refrigerator, Stove, Water softener, Washer, Hood Fan, Window Coverings, Garage door opener
Heating	Natural gas Forced air
Cooling	Central air conditioning
Fireplace	Yes

# of Fireplaces	1
# of Stories	2
Has Basement	Yes

## Exterior

Exterior	Aluminum siding, Brick
Exterior Features	Landscaped
Foundation	Poured Concrete

## Listing Details

Listing Office	Re/Max Icon Realty
----------------	--------------------



The trademarks MLS®, Multiple Listing Service® and the associated logos are owned by The Canadian Real Estate Association (CREA) and identify the quality of services provided by real estate professionals who are members of CREA. REALTOR®. Member of CREA and more.

Listing information last updated on October 13th, 2025 at 12:01pm PDT